

Overview

HPE ProLiant DL325 Gen10 Server

The HPE ProLiant DL325 Gen10 Server is the secure and versatile single socket server for virtualization and I/O intensive workloads. This 1P, 1U server delivers an exceptional balance of processor, memory and I/O for 2P performance at 1P TCO. Get the most out of your virtualized environment with this versatile server.



8SFF Front View - 8SFF + ODD Shown

- | | |
|--|---|
| 1. Quick removal access panel | 2. Serial no. label pull tab |
| 3. Optional Media Bay. | 4. Power On/Standby button and system power LED |
| Option Shown: DVD-RW or DVD-ROM | 5. Health LED |
| Option: +2 SFF SAS/SATA (total 10 SFF) | 6. USB 3.0 port |
| Option: +2 SFF NVMe drives | 7. iLO Service Port |
| 8. UID button/LED | 9. NIC status LED |
| 10. Standard 8 SAS/SATA drive bays | |



Overview

NVMe SFF Front View - 10 SFF NVMe Shown

1. Quick removal access panel
2. Serial no. label pull tab
3. Optional Media Bay.
4. Power On/Standby button and system power LED
5. Health LED
6. USB 3.0 port
7. iLO Service Port
8. UID button/LED
9. NIC status LED
10. Standard 8 NVMe drive bays

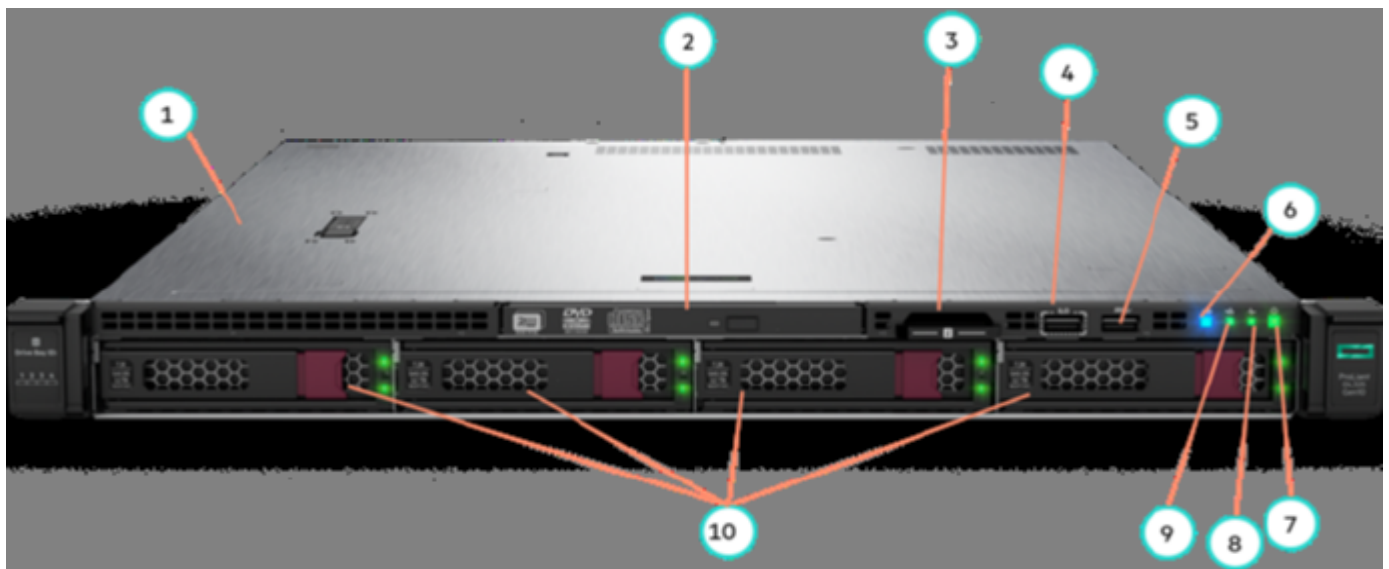
Option Shown: +2 SFF NVMe drives (total 10SFF NVMe)

Option: +2 SFF SAS/SATA

Option: DVD-RW or DVD-ROM

8. UID button/LED

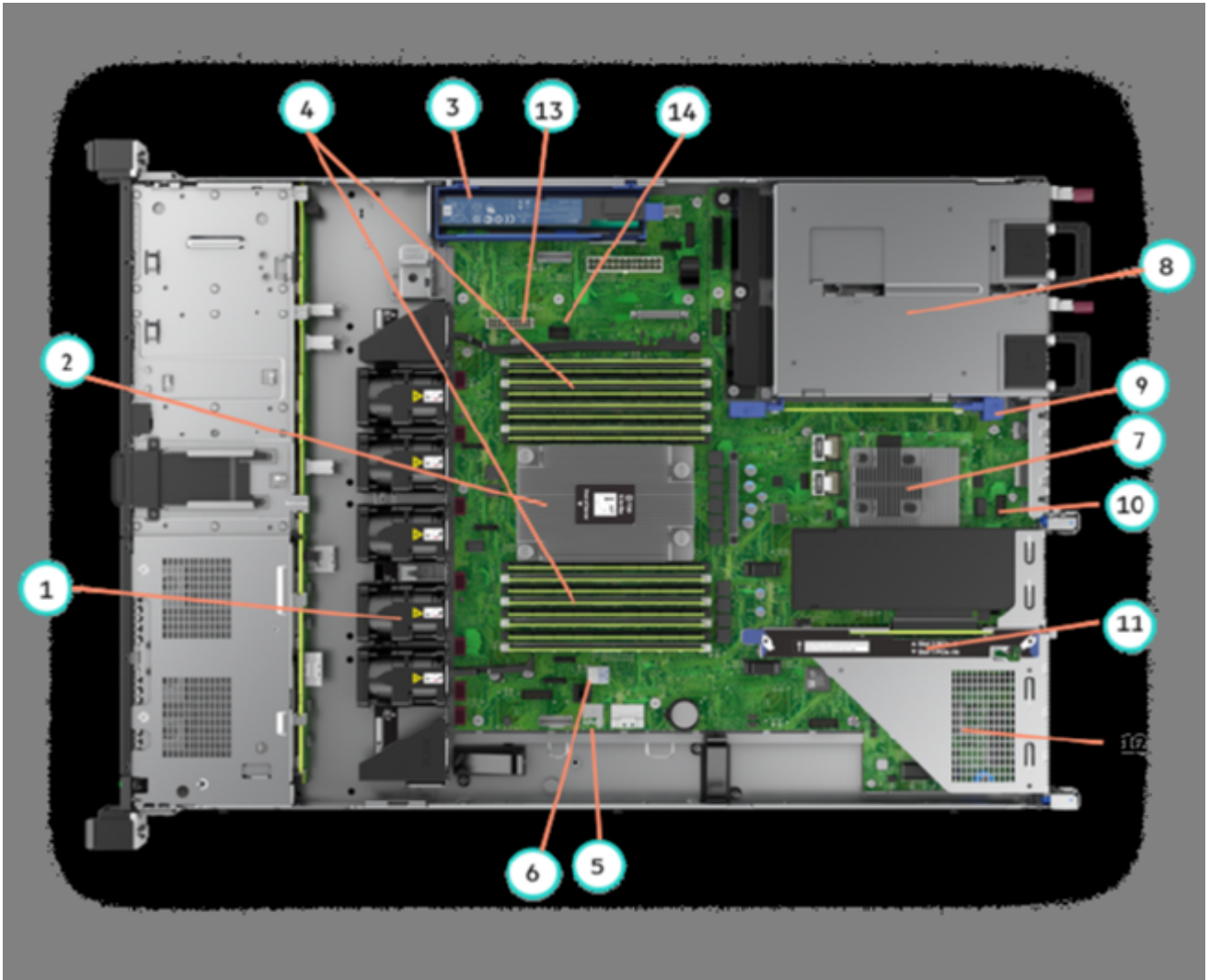
10. Standard 8 NVMe drive bays



4LFF Front View - with Optional ODD shown

1. Quick removal access panel
2. Optional: DVD-RW or DVD-ROM shown
3. Serial no. label pull tab
4. iLO Service Port
5. USB 3.0 Port
6. UID button/LED
7. Power On/Standby button and system power LED
8. Health LED
9. NIC status LED
10. Standard 4 SAS/SATA drive bays

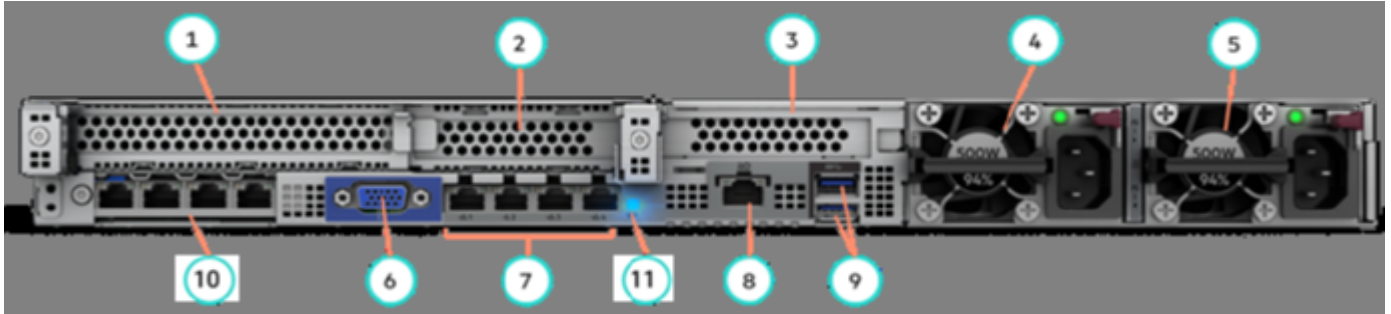
Overview



Internal View 8SFF chassis -with optional FlexLOM, Smart array shown

- | | |
|---|--|
| 1. Fan cage shown with 5 Performance Hot-swappable fans | 2. Processor (heatsinks shown) |
| 3. Optional HPE Smart Storage Battery | 4. DDR4 DIMM slots. Shown fully populated in 16 slots |
| 5. MicroSD card slot | 6. Internal USB 3.0 connector |
| 7. Optional HPE Flexible Smart Array Controller (P408i-a shown) | 8. Hot Plug redundant HPE Flexible Slot Power supplies |
| 9. Connection for second (optional) riser | 10. Serial Port Connector |
| 11. Primary PCIe riser, standard | 12. (Under) Optional Flexible LOM slot |
| 13. Hard drive Backplane Power Connector | 14. Chassis intrusion detection connector |

Overview



Rear View - With optional FlexLOM shown.

- | | |
|--|--|
| <ol style="list-style-type: none"> 1. Slot 1 PCIe 3.0 2. Slot 2 PCIe 3.0 3. Optional Slot 3 PCIe 3.0 4. HPE Flexible Slot Power Supply. Bay 1 5. HPE Flexible Slot Power Supply. Bay 2 6. VGA Port 7. Embedded 4x 1GbE Adapter 8. iLO Management Port 9. USB 3.0 Ports 10. Option: FlexibleLOM (Shown: 4x 1GbE) 11. UID LED | <ol style="list-style-type: none"> 2. Slot 2 PCIe 3.0 4. HPE Flexible Slot Power Supply Bay 2 6. VGA Port 8. iLO Management Port 10. Option: FlexibleLOM (Shown: 4x 1GbE) |
|--|--|

NOTE: Supports Various NICs up to 25GbE.

What's New

- New 64GB RDIMMS using the 16Gb memory technology providing better performance and power efficiency
- New SATA Read Intensive SSD drives
- AMD® EPYC® 7000 Processor Family
- Support for upto 10 NVMe drives

Platform Information

Form Factor 1U rack

Chassis Types 8 SFF with optional Optical Drive, 2 SFF SAS/SATA or 2 NVMe drive bay options
 8 SFF NVMe with optional Optical Drive 2 SFF SAS/SATA or 2 NVMe drive bay options
 4 LFF with an optional Optical Drive bay

NOTE: The 8 SFF can be upgraded with either an additional 2SFF SAS/SATA kit for a total 10 SAS/SATA drives or 2SFF NVMe Kit for a total of 8 SAS/SATA + 2 NVMe drives.

NOTE: The NVMe chassis can be upgraded with either an additional 2SFF NVMe kit for a total of 10 NVMe drives or 2SFF SAS/SATA kit for a total of 8NVMe + 2 SAS/SATA drives.

NOTE: S100i Smart Array Controller is not available till end of 2018 and the embedded SATA controller works only in AHCI mode till then. It is highly recommended to buy Smart Array Controller to connect drives for SAS/SATA RAID

System Fans 4LFF Chassis includes 5 Single Rotor Hot Swappable cable fans
 8SFF Chassis includes 5 Dual Rotor Hot Swappable cable fans
 NVMe Chassis includes 7 Dual Rotor Hot Swappable cable fans

Standard Features

Standard Features

Processors - One of the following depending on model.

NOTE: For more information regarding AMD EPYC processors, please see the following:

<https://www.amd.com/en/products/epyc>.

AMD EPYC Processor	Cores	Base Frequency	Max Frequency	Max Memory	Wattage	Cache	Memory
EPYC 7601	32	2.2GHz	3.2GHz	2TB	180	64MB	2666
EPYC 7551P	32	2.0GHz	3.0GHz	2TB	180	64MB	2666
EPYC 7501	32	2.0GHz	3.0GHz	2TB	155/170	64MB	2666
EPYC 7451	24	2.3GHz	3.2GHz	2TB	180	64MB	2400/26
EPYC 7401P	24	2.0GHz	3.0GHz	2TB	155/170	64MB	2400/26
EPYC 7351P	16	2.4GHz	2.9GHz	2TB	155/170	64MB	2400/26
EPYC 7301	16	2.2GHz	2.7GHz	2TB	155/170	64MB	2400/26
EPYC 7281	16	2.1GHz	2.7GHz	2TB	155/170	32MB	2400/26
EPYC 7261	8	2.5GHz	2.9GHz	2TB	155/170	64MB	2400/26
EPYC 7251	8	2.1GHz	2.9GHz	2TB	120	32MB	2400

NOTE: All AMD EPYC processors can support up to 2TB of memory each.

Chipset

No chipset - System on Chip (SoC) design.

On System Management Chipset

HPE iLO 5 ASIC

NOTE: Read and learn more in the [iLO QuickSpecs](#).

Memory

One of the following depending on model

Type:		HPE DDR4 SmartMemory, Registered (RDIMM), Load Reduced (LRDIMM)
DIMM Slots Available	16	16 DIMM slots per processor, 8 channels per processor, 2 DIMMs per channel
Maximum capacity (LRDIMM)	2.0 TB	16 x 128 GB LRDIMM @ 2666 MT/S
Maximum capacity (RDIMM)	1.0 TB	16 x 64 GB RDIMM @ 2666 MT/S

NOTE: The maximum memory speed is limited by the processor selection.

NOTE: Mixing of RDIMM and LRDIMM memory is not supported.

NOTE: When 2DIMMs are populated per channel, memory speed drops to 2133 MT/S

Expansion Slots

Default Primary Riser

Slots #	Technology	Bus Width	Connector	Slot Form Factor
1	PCIe 3.0	X16	X16	Full-height, full-length slot
2	PCIe 3.0	X8	X8	Low Profile

NOTE: Bus Width Indicates the number of physical electrical lanes running to the connector.

Standard Features

Secondary Riser

Slots #	Technology	Bus Width	Connector Width	Slot Form Factor	Note
1	PCIe 3.0	X16	X16	Low Profile	Proc

NOTE: Secondary riser cannot be installed with Modular Smart Array Options

NOTE: Bus width indicated the number of physical electrical lanes running to the connector.

Storage Controllers

The Gen10 controller naming framework has been updated to simplify identification as depicted below. For a more detailed breakdown of the available Gen10 Smart Array controllers visit the [HPE Smart Array Gen10 Controllers Data Sheet](#).

One of the following depending on model

Software RAID HPE Smart Array S100i SR Gen10 SW RAID

NOTE: HPE Smart Array S100i SR Gen10 SW RAID will operate in UEFI mode only. For legacy support an additional controller will be needed, and for CTO orders please also select the Legacy mode settings part, 758959-B22.

NOTE: HPE Smart Array S100i SR Gen10 SW RAID is off by default and must be enabled.

NOTE: S100i is available 1H2019.

Essential RAID Controller HPE Smart Array E208i-a SR G10 LH Controller

HPE Smart Array E208e-p SR Gen10 Controller

Performance RAID Controller HPE Smart Array P408i-a SR G10 LH Controller

HPE Smart Array P408e-p SR Gen10 Controller

HPE Smart Array P816i-a SR G10 LH Controller

NOTE: Performance RAID Controllers require the HPE Smart Storage Battery (P01366-B21) which is sold separately.

Internal Storage Devices

One of the following depending on model

Optical Drive Optional: DVD-ROM, DVD-RW

Hard Drives None ship standard

Maximum Internal Storage

	CAPACITY	CONFIGURATION
Hot Plug SFF SAS	24.0 TB	8+2 x 2.4 TB (with optional 2SFF drive cage)
Hot Plug SFF SATA	20.0 TB	8+2 x 2 TB (with optional 2SFF drive cage)
Hot Plug LFF SAS	48 TB	4 x 12 TB
Hot Plug LFF SATA	48 TB	4 x 12 TB
Hot Plug SFF SAS SSD	153 TB	8+2 x 15.3 TB (with optional 2SFF drive cage)
Hot Plug LFF SATA SSD	7.68 TB	4 x 1.92 TB
Hot Plug SFF NVMe PCIe SSD	40 TB NVMe	8+2 x 4 TB NVMe

Power Supply

HPE 500W Non Hot Plug Low Halogen FIO Power Supply

Standard Features

NOTE: Available in 92% efficiency.

HPE 500W Flex Slot Platinum Hot Plug Low Halogen Power Supply Kit

NOTE: Available in 94% efficiency.

HPE 800W Flex Slot Platinum Hot Plug Low Halogen Power Supply Kit

NOTE: Available in 94% and 96% efficiency.

NOTE: Also available in -48VDC and 227VAC/380VDC power inputs.

HPE 1600W Flex Slot Platinum Hot Plug Low Halogen Power Supply Kit

NOTE: Available in 94% efficiency.

NOTE: 240v power input only.

The HPE 500W FIO Power Supply offers Gold-certified 80 Plus power efficiency up to 92% with an optimized set of features for non-redundant power configurations for Gen10 ProLiant ML 10/100 Series Servers, as well as ML350 Gen10 and DL325 Gen10.

HPE Flexible Slot (Flex Slot) Power Supplies share a common electrical and physical design that allows for hot plug, tool-less installation into HPE ProLiant Gen10 Performance Servers. Flex Slot power supplies are certified for high-efficiency operation and offer multiple power output options, allowing users to "right-size" a power supply for specific server configurations. This flexibility helps to reduce power waste, lower overall energy costs, and avoid "trapped" power capacity in the data center.

All pre-configured servers ship with a standard 6-foot IEC C-13/C-14 jumper cord (A0K02A). This jumper cord is also included in each standard AC power supply option kit. If a different power cord is required, please check the [ProLiant Power Cables](#) web page.

To review the power requirements for your selected system, please use the [HPE Power Advisor Tool](#).

For information on power specifications and technical content visit [HPE Server power supplies](#).

Interfaces

Serial	Optional, rear
Video Port	1 Rear VGA Port - Standard
Network Ports	4 x 1 Gb ports shipping standard with optional FlexibleLOM or stand up card
HPE iLO Remote Management Network Port	1 Gb Dedicated
Front iLO Service Port	1 standard
Micro SD Slot	1 Micro SD

NOTE: The Micro SD slot is not a hot-pluggable device. Customers should not attempt to plug an SD card into the SD slot while the server is powered.

USB 3.0 Up to 4 total: 1 front, 2 rear, 1 internal (secure)

Operating Systems and Virtualization Software Support for ProLiant Servers

[Windows Server 2012 R2](#) (Most Recent Version)

[Windows Server 2016](#) (Most Recent Version)

[VMware ESXi 6.5 U2 and 6.7](#)

[Red Hat Enterprise Linux \(RHEL\) 7.4 and 7.5](#)

[SUSE Linux Enterprise Server \(SLES\) 12 SP3](#)

Standard Features

ClearOS

HPE and ClearCenter will help you lower the cost of building on-premise solutions without sacrificing security and ease of use. ProLiant servers with ClearOS give you a simple, secure, and affordable operating system with an intuitive web based graphical interface that provides a cloud-like experience on- premise, and an Application Marketplace with over 100 apps and growing. Whether you're starting out or scaling, you decide what applications you need and pay as you grow.

NOTE: ClearOS allows you to build a fully functional server that is just right for you at no upfront cost.

For more information on ClearOS, please visit <http://www.hpe.com/servers/clearos>

CentOS

NOTE: CentOS not directly supported / Community Supported (Based on RHEL so RHEL testing and enablement applicable to CentOS) CentOS 7.4/ CentOS 7.5

NOTE: For more information on Hewlett Packard Enterprise Certified and Supported ProLiant Servers for OS and Virtualization Software and latest listing of software drivers available for your server

<http://www.hpe.com/info/ossupport>

Industry Standard Compliance

ACPI 6.1 Compliant

PCIe 3.0 Compliant

WOL Support

Microsoft® Logo certifications

PXE Support

VGA Port

USB 3.0 Compliant (internal)

USB 2.0 Compliant (external ports via SUV)

Energy Star

SMBIOS 3.1

UEFI 2.6

Redfish API

IPMI 2.0

Secure Digital 2.0

Advanced Encryption Standard (AES)

Triple Data Encryption Standard (3DES)

SNMP v3

TLS 1.2

DMTF Systems Management Architecture for Server Hardware Command Line Protocol (SMASH CLP)

Active Directory v1.0

ASHRAE A3/A4

NOTE: For additional technical thermal details regarding ambient temperatures, humidity and features support please visit:

<http://www.hpe.com/servers/ashrae>.

UEFI (Unified Extensible Firmware Interface Forum)

NOTE: UEFI is the default for the DL325 Gen10. Legacy mode can be selected in the field or as a CTO option (758959-B22).

Graphics

Integrated Video Standard

- Video modes up to 1920 x 1200@60Hz (32 bpp)
- 16MB Video Memory

Standard Features

HPE iLO 5 on system management memory

- 32 MB Flash
- 4 Gbit DDR 3 with ECC protection

HPE Server UEFI/Legacy ROM

Unified Extensible Firmware Interface (UEFI) is an industry standard that provides better manageability and more secured configuration than the legacy ROM while interacting with your server at boot time. HPE ProLiant Gen10 servers have a UEFI Class 2 implementation and support both UEFI Mode (default) and Legacy BIOS Mode.

NOTE: The UEFI System Utilities tool is analogous to the HPE ROM-Based Setup Utility (RBSU) of legacy BIOS. For more information, please visit <http://www.hpe.com/servers/uefi>.

UEFI enables numerous new capabilities specific to HPE ProLiant servers such as:

- Secure Boot and Secure Start enable for enhanced security
- Operating system specific functionality
- Support for > 2.2 TB (using GPT) boot drives
- USB 3.0 Stack
- Embedded UEFI Shell
- Mass Configuration Deployment Tool using iLO RESTful API that is Redfish API Conformant
- PXE boot support for IPv6 networks
- Workload Profiles for simple performance optimization

UEFI Boot Mode only:

- TPM 2.0 Support
- NVMe Boot Support
- iSCSI Software Initiator Support.
- HTTP/HTTPS Boot support as a PXE alternative.
- Boot support for option cards that only support a UEFI option ROM

NOTE: For UEFI Boot Mode, boot environment and OS image installations should be configured properly to support UEFI.

NOTE: UEFI FIO Setting (758959-B22) can be selected to configure the system in Legacy mode in the factory for your HPE ProLiant Gen10 Server.

Embedded Management

HPE Integrated Lights-Out (HPE iLO)

Monitor your servers for ongoing management, service alerting, reporting and remote management with HPE iLO. Learn more at <http://www.hpe.com/info/ilo>.

UEFI

Configure and boot your servers securely with industry standard Unified Extensible Firmware Interface (UEFI). Learn more at <http://www.hpe.com/servers/uefi>.

Intelligent Provisioning

Hassle free server and OS provisioning for 1 or more servers with Intelligent Provisioning. Learn more at <http://www.hpe.com/servers/intelligentprovisioning>.

Standard Features

iLO RESTful API iLO RESTful API is Redfish API conformance and offers simplified server management automation such as configuration and maintenance tasks based on modern industry standards. Learn more at <http://www.hpe.com/info/restfulapi>.

Server Utilities

Active Health System The HPE Active Health System (AHS) is an essential component of the iLO management portfolio that provides continuous, proactive health monitoring of HPE servers. Learn more at <http://www.hpe.com/servers/ahs>.

Active Health System Viewer Use the Active Health System Viewer, a web-based portal, to easily read AHS logs and speed problem resolution with HPE self-repair recommendations, to learn more visit: <http://www.hpe.com/servers/ahsv>.

Smart Update

Keep your servers up to date with the HPE Smart Update solution by using Smart Update Manager (SUM) to optimize the firmware and driver updates of the Service Pack for ProLiant (SPP). Learn more at <http://www.hpe.com/info/smartupdate>.

iLO Amplifier Pack

Designed for large enterprise and service provider environments with hundreds of HPE servers, the iLO Amplifier Pack is a free, downloadable open virtual application (OVA) that delivers the power to discover, inventory and update Gen8, Gen9 and Gen10 HPE servers at unmatched speed and scale. Use with an iLO Advanced License to unlock full capabilities. Learn more at <http://www.hpe.com/servers/iLOamplifierpack>.

HPE iLO Mobile Application

Enables the ability to access, deploy, and manage your server anytime from anywhere from select smartphones and mobile devices. For additional information please visit: <http://www.hpe.com/info/ilo/mobileapp>.

RESTful Interface Tool

RESTful Interface tool (iLOREST) is a single scripting tool to provision using iLO RESTful API to discover and deploy servers at scale. Learn more at <http://www.hpe.com/info/resttool>.

Scripting Tools

Provision one to many servers using your own scripts to discover and deploy with Scripting Tool (STK) for Windows and Linux or Scripting Tools for Windows PowerShell. Learn more at <http://www.hpe.com/servers/stk> or <http://www.hpe.com/servers/powershell>.

HPE OneView Standard

HPE OneView Standard can be used for inventory, health monitoring, alerting, and reporting without additional fees. It can monitor multiple HPE server generations. The user interface is similar to the HPE OneView Advanced version, but the software-defined functionality is not available. Learn more at <http://www.hpe.com/info/oneview>.

HPE Systems Insight Manager (HPE SIM)

Ideal for environments already using HPE SIM, it allows you to monitor the health of your HPE ProLiant Servers and HPE Integrity Servers. Also provides you with basic support for non-HPE servers. HPE SIM also integrates with Smart Update Manager to provide quick and seamless firmware updates. Learn more at <http://www.hpe.com/info/hpesim>.

Standard Features

Security

UEFI Secure Boot and Secure Start support

Immutable Silicon Root of Trust

FIPS 140-2 validation (iLO 5 certification in progress)

- Common Criteria certification (iLO 5 certification in progress)

- Configurable for PCI DSS compliance

- Advanced Encryption Standard (AES) and Triple Data Encryption Standard (3DES) on browser

Support for Commercial National Security Algorithms (CNSA)

Tamper-free updates - components digitally signed and verified

Secure Recovery - recover critical firmware to known good state on detection of compromised firmware

Ability to rollback firmware

- Secure erase of NAND/User data

- TPM (Trusted Platform Module) 1.2 option

- TPM (Trusted Platform Module) 2.0 option

- Bezel Locking Kit option

- Chassis Intrusion detection option

Warranty

This product is covered by a global limited warranty and supported by HPE Services and a worldwide network of HPE Authorized Channel Partners resellers. Hardware diagnostic support and repair is available for three years from date of purchase. Support for software and initial setup is available for 90 days from date of purchase. Enhancements to warranty services are available through HPE Pointnext operational services or customized service agreements. Hard drives have either a one year or three year warranty; refer to the specific hard drive QuickSpecs for details.

NOTE: Server Warranty includes 3-Year Parts, 3-Year Labor, 3-Year Onsite support with next business day response. Warranty repairs may be accomplished through the use of Customer Self Repair (CSR) parts. These parts fall into two categories: 1) Mandatory CSR parts are designed for easy replacement. A travel and labor charge will result when customers decline to replace a Mandatory CSR part; 2) Optional CSR parts are also designed for easy replacement but may involve added complexity. Customers may choose to have Hewlett Packard Enterprise replace Optional CSR parts at no charge. Additional information regarding worldwide limited warranty and technical support is available at:

<http://h17007.www1.hpe.com/us/en/enterprise/servers/warranty/>

Optional Features

Server Management

HPE iLO Advanced

HPE iLO Advanced licenses offer smart remote functionality without compromise, for all HPE ProLiant servers. The license includes the full integrated remote console, virtual keyboard, video, and mouse (KVM), multi-user collaboration, console record and replay, and GUI-based and scripted virtual media and virtual folders. You can also activate the enhanced security and power management functionality. Learn more about HPE iLO Advanced at <http://www.hpe.com/servers/iloadvanced>.

HPE iLO Advanced Premium Security Edition

HPE iLO Advanced Premium Security Edition for iLO 5 includes iLO Advanced License plus high-end security modes, unique security capabilities, like Automatic FW recovery; Runtime FW verification, and Secure erase. Learn more about HPE iLO Advanced Premium Security Edition at: <http://www.hpe.com/servers/ilopremium>.

HPE OneView Advanced

HPE OneView brings a new level of automation to infrastructure management by taking a template driven approach to provisioning, updating, and integrating compute, storage, and networking infrastructure. It provides full-featured licenses which can be purchased for managing Gen8, Gen9 and Gen10 servers. To learn more visit <http://www.hpe.com/info/oneview>.

HPE Insight Cluster Management Utility (CMU)

HPE Insight Cluster Management Utility is a HyperScale management framework that includes software for the centralized provisioning, management and monitoring of nodes and infrastructure. Learn more at <http://www.hpe.com/info/cmu>.

Rack and Power Infrastructure

The story may end with servers, but it starts with the foundation that makes compute go - and business grow. We've reinvented our entire portfolio of rack and power products to make IT infrastructure more secure, more practical, and more efficient. In other words, we've created a stronger, smarter, and simpler infrastructure to help you get the most out of your IT equipment. As an industry leader, Hewlett Packard Enterprise is uniquely positioned to address the key concerns of power, cooling, cable management and system access.

HPE G2 Advanced and Enterprise Racks are perfect for the server room or today's modern data center with enhanced airflow and thermal management, flexible cable management, and a 10 year Warranty to support higher density computing.

HPE G2 PDUs offer reliable power in flexible form factors that operate at temperatures up to 60°C, include color-coded outlets and load segments and a low-profile design for optimal access to the rack and support for dense rack environments.

HPE Uninterruptible Power Systems are cost-effective power protection for any type workload. Some UPSs include options for remote management and extended runtime modules so your critical dense data center is covered in power outages.

HPE KVM Solutions include a console and switches designed to work with your server and IT equipment reliably. We've got a cost-effective KVM switch for your first rack and multiple connection IP switches with remote management and security capabilities to keep your data center rack up and running.

Learn more about HPE Racks, KVM, PDUs and UPSs at [HPE Rack and Power Infrastructure](#).

One Config Simple (SCE)

SCE is a guided self-service tool to help sales and non-technical people provide customers with initial configurations in 3 to 5 minutes. You may then send the configuration on for configuration help, or use in your existing ordering processes. If you require "custom" rack configuration or configuration for products not available in SCE, please contact Hewlett Packard Enterprise Customer Business Center or an Authorized Partner for assistance. <https://h22174.www2.hpe.com/SimplifiedConfig/Welcome>

Service and Support

HPE Pointnext - Service and Support

Protect your business beyond warranty with HPE Support Services

HPE Pointnext provides a comprehensive portfolio including Advisory and Transformational, Professional, and Operational Services to help accelerate your digital transformation. From the onset of your transformation journey, Advisory and Transformational Services focus on designing the transformation and creating a solution roadmap. Professional Services specializes in creative configurations with flawless and on-time implementation, and on-budget execution. Finally, operational services provides innovative new approaches like Flexible Capacity and Datacenter Care, to keep your business at peak performance. HPE is ready to bring together all the pieces of the puzzle for you, with an eye on the future, and make the complex simple.

Connect your devices:

Unlock all of the benefits of your technology investment by connecting your products to Hewlett Packard Enterprise. Reduce down time and improve diagnostic accuracy with a single consolidated view of your environment. By connecting, you will receive 24x7 monitoring, pre-failure alerts, automatic call logging, and automatic parts dispatch. HPE Proactive Care Service and HPE Datacenter Care Service customers will also benefit from proactive activities to help prevent issues and increase optimization. All of these benefits are already available to you with your server storage and networking products, securely connected to HPE support.

Learn more about getting connected at <http://www.hpe.com/services/getconnected>

Other related Services

HPE Server Hardware Installation

Provides for the basic hardware installation of HPE branded servers, storage devices and networking options to assist you in bringing your new hardware into operation in a timely and professional manner. <https://www.hpe.com/h20195/V2/GetPDF.aspx/5981-9356EN.pdf>

Parts and Materials

HPE will provide HPE-supported replacement parts and materials necessary to maintain the covered hardware product in operating condition, including parts and materials for available and recommended engineering improvements.

Parts and components that have reached their maximum supported lifetime and/or the maximum usage limitations as set forth in the manufacturer's operating manual, product quick-specs, or the technical product data sheet will not be provided, repaired, or replaced as part of these services.

The defective media retention service feature option applies only to Disk or eligible SSD/Flash Drives replaced by HPE due to malfunction.

HPE Education Services

Keep your IT staff trained making sure they have the right skills to deliver on your business outcomes. Book on a class today and learn how to get the most from your technology investment.

<http://www.hpe.com/ww/learn>

HPE Support Center

The HPE Support Center is a personalized online support portal with access to information, tools and experts to support HPE business products. Submit support cases online, chat with HPE experts, access support resources or collaborate with peers.

Service and Support

Learn more <http://www.hpe.com/support/hpesc>

HPE's Support Center Mobile App* allows you to resolve issues yourself or quickly connect to an agent for live support. Now, you can get access to personalized IT support anywhere, anytime.

HPE Insight Remote Support and HPE Support Center are available at no additional cost with a HPE warranty, HPE Support Service or HPE contractual support agreement.

*HPE Support Center Mobile App is subject to local availability.

For more information: <http://www.hpe.com/services>

Parts and Materials

Hewlett Packard Enterprise will provide HPE-supported replacement parts and materials necessary to maintain the covered hardware product in operating condition, including parts and materials for available and recommended engineering improvements.

Parts and components that have reached their maximum supported lifetime and/or the maximum usage limitations as set forth in the manufacturer's operating manual, product quick-specs, or the technical product data sheet will not be provided, repaired, or replaced as part of these services.

The defective media retention service feature option applies only to Disk or eligible SSD/Flash Drives replaced by Hewlett Packard Enterprise due to malfunction.

Pre-configured Models

	Entry Models	Performance Model
[SKU Number]	P04646-xx1	P04647-xx1
Model Name	HPE ProLiant DL325 Gen10 7251 2.1GHz 8-core 1P 8GB-R E208i-a 4LFF 500W PS Entry Server	HPE ProLiant DL325 Gen10 7351P 2.4GHz 16-core 1P 16GB-R E208i-a 8SFF 1x500W PS Performance Server
Processor	7251 (8-Core, 2.1 GHz, 120W)	7351P (16-Core, 2.4 GHz, 155/170W)
Number of Processors	One processor	One processor
Memory	8 GB RDIMM SR 2666 MT/s (1x 8 GB)	16 GB RDIMM SR 2600 MT/s (2x 8 GB)
Network Controller	HPE 1Gb Ethernet 4-Port 331i Adapter plus optional HPE FlexibleLOM or stand up card	HPE 1Gb Ethernet 4-Port 331i Adapter plus optional HPE FlexibleLOM or stand up card
Storage Controller	E208i-a NOTE: 8-Port modular Smart Array.	E208i-a NOTE: 8-Port modular Smart Array.
Hard Drive	None ship as standard	None ship as standard
Internal Storage	4 LFF chassis	8 SFF Chassis
Optical Drive Bay	Optional	Optional
Optical Drive	None ship as standard	None ship as standard
PCI-Express Slots	2-slots (x16, x8) as standard	2-slots (x16, x8) as standard
Power Supply	500W HPE Non-Hot-Plug/Non-RPS Power Supply	1x 500W HPE FlexSlot Power Supply
Fans	5-standard fans	
Management	HPE iLO Standard with Intelligent Provisioning (embedded), HPE OneView Standard (requires download); HPE iLO Advanced, HPE iLO Advanced Premium Security Edition and HPE OneView Advanced (require licenses)	
Energy Star	2.1 certified	
Form Factor	1U Rack, Easy Install rails without CMA	
Warranty	3-year parts, 3-year labor, 3-year onsite support with next business day response.	

Pre-configured Models

	Performance Model
[SKU Number]	P04648-xx1
Model Name	HPE ProLiant DL325 Gen10 7401P 2GHz 24-core 1P 32GB-R P408i-a 8SFF 1x800W PS Performance Server
Processor	7401P (24-Core, 2.0 GHz, 155/170W)
Number of Processors	One processor
Memory	32 GB RDIMM DR 2666 MT/s (2x 16 GB)
Network Controller	HPE 1Gb Ethernet 4-Port 331i Adapter plus optional HPE FlexibleLOM or stand up card
Storage Controller	P408i-a NOTE: 8-Port modular Smart Array. NOTE: Smart Storage battery included.
Hard Drive	None ship as standard
Internal Storage	8 SFF Chassis
Optical Drive Bay	Optional
Optical Drive	Optional
PCI-Express Slots	2-slots (x16, x8) as standard
Power Supply	1x 800W HPE FlexSlot power supply
Fans	5-standard fans
Management	HPE iLO Standard with Intelligent Provisioning (embedded), HPE OneView Standard (requires download); HPE iLO Advanced, HPE iLO Advanced Premium Security Edition and HPE OneView Advanced (require licenses)
Energy Star	2.1 certified
Form Factor	1U Rack, Easy Install rails without CMA
Warranty	3-year parts, 3-year labor, 3-year onsite support with next business day response.

Pre-configured Models

	SMB Solution Model
[SKU Number]	P04649-B21/291
Model Name	HPE ProLiant DL325 Gen10 7251 2.1GHz 8-core 1P 16GB-R P408i-a 8SFF 2x500W PS Solution Server
Processor	7251 (8-Core, 2.1 GHz, 120W)
Number of Processors	One processor
Memory	16 GB RDIMM DR 2666 MT/s (1x 16 GB)
Network Controller	HPE 1Gb Ethernet 4-Port 331i Adapter plus optional HPE FlexibleLOM or stand up card
Storage Controller	P408i-a NOTE: 8-Port modular Smart Array. NOTE: Smart Storage battery included.
Hard Drive	None ship as standard
Internal Storage	8 SFF Chassis
Optical Drive Bay	Optional
Optical Drive	Optional
PCI-Express Slots	2-slots (x16, x8) as standard
Power Supply	2x 500W HPE FlexSlot power supply
Fans	5-standard fans
Software	ClearOS/ClearVM NOTE: ClearOS/VM installer on a 8GB USB flash key pre-built inside the system.
Management	HPE iLO Standard with Intelligent Provisioning (embedded), HPE OneView Standard (requires download); HPE iLO Advanced, HPE iLO Advanced Premium Security Edition and HPE OneView Advanced (require licenses)
Energy Star	2.1 certified
Form Factor	1U Rack, Easy Install rails without CMA
Warranty	3-year parts, 3-year labor, 3-year onsite support with next business day response.

Country Code	xx1 = B21	Worldwide
Key	NOTE: The -B21 WW SKU is to be ordered in all countries other than Japan.	
	xx1 = 291	Japan
	xx1 = AA1	PRC

Configuration Information – Factory Integrated Models

Recommended

Offering the best combination of performance, value and availability, Recommended Options have been selected by HPE experts to provide the right technology for a range of workloads and market segments. Fully integrated into the ProLiant management and security experience, Recommended Options provide the best fit with timely availability.

Extended

Extended Options provide an extended catalog of products tailored for customers in specific markets or with specific workloads, requiring the utmost in performance or value. Fully integrated into the ProLiant management and security experience, Extended Options represent great value and performance but typically have a longer lead-time.

This section lists some of the steps required to configure a Factory Integrated Model. To ensure only valid configurations are ordered, Hewlett Packard Enterprise recommends the use of an HPE approved configurator. Contact your local sales representative for information on configurable product offerings and requirements.

1. Factory Integrated Models must start with a CTO Server.
2. FIO indicates that this option is only available as a factory installable option.
3. All Factory Integrated Models will be populated with sufficient hard drive blanks based on the number of initial hard drives ordered with the server.
4. Some options may not be integrated at the factory. Contact your local sales representative for additional information.

Step 1: Base Configuration (choose one of the following configurable models)

CTO Server	HPE ProLiant DL325 Gen10 4 LFF CTO Server	HPE ProLiant DL325 Gen10 8 SFF CTO Server	HPE ProLiant DL325 Gen10 NVMe SFF CTO Server
SKU Number	P04653-B21	P04654-B21	P04662-B21
TAA SKU	P04652-B21	P04848-B21	P05046-B21
Processor	Not included as standard	Not included as standard	Not included as standard
DIMM Slots	16-DIMM slots	16-DIMM slots	16-DIMM slots
Storage Controller	Choice of HPE modular Smart Array and PCIe plug-in controller		
PCIe	Two standard in primary riser		
Drive Cage - included	4 LFF	8 SFF	8 SFF NVMe
Network Controller	HPE 1Gb Ethernet 4-Port 331i Adapter plus optional HPE FlexibleLOM or stand up card		
Fans	5-Standard	5-Performance	7-Performance
Management	HPE iLO with Intelligent Provisioning (standard), iLO Advances and OneView (optional)		
USB	Front: 1 USB 3.0 + iLO service port Rear: 2 USB 3.0 Internal: 1 USB 3.0	Front: 1 USB 3.0 + iLO service port Rear: 2 USB 3.0 Internal: 1 USB 3.0	Front: 1 USB 3.0 + iLO service port Rear: 2 USB 3.0 Internal: 1 USB 3.0

NOTE: HPE offers multiple Trade Agreement Act (TAA) compliant configurations to meet the needs of US Federal Government customers. These products are either manufactured or substantially transformed in a designated country. TAA compliance is only provided when HPE options are included as part of factory integrated orders (CTO).

NOTE: TAA chassis are only orderable in North America and Canada.

NOTE: The HPE ProLiant DL325 Gen10 NVMe SFF CTO Server ships with the cable required for 8

Configuration Information – Factory Integrated Models

NVMe drives installation.

NOTE: All CTO servers are Energy Star 2.1 compliant.

CTO Server	8 SFF CTO Chassis	4 LFF CTO Chassis	NVMe SFF CTO Chassis
Included Drive Cage	8 SFF SAS/SATA	4 LFF + UMB	8 NVMe Chassis
Additional drive cages	-	-	-
Universal Media Bay	1 Optional	1 Included	1 Optional
ODD	1 Optional with UMB	1 Optional	1 Optional with UMB
2 SFF SAS/SATA	1 Optional	Not available	1 Optional
2 SFF NVMe	1 Optional	Not available	1 Optional

NOTE: This applies to CTO configurations, field upgrades may differ depending field configuration.

NOTE: Only one of the 2 SFF SAS/SATA or 2 SFF NVMe can be selected at any time.

Step 2a: Choose Required Options - Processors

(only one of the following unless otherwise noted)

Please select one -L21 processor required below.

NOTE: All CTO Models ship with redundant fan configuration.

NOTE: DDR4 memory speed will depend on the quantity and type of DIMMs installed.

NOTE: Processors with greater than 170W will ship with the High Performance heatsink.

Processor Option Kits - Recommended

Required Processor

HPE DL325 Gen10 AMD EPYC 7601 (2.2GHz/32-core/180W) FIO Processor Kit
(Recommended)

P04851-L21

NOTE: Ships with Performance Heatsink.

HPE DL325 Gen10 AMD EPYC 7551P (2.0GHz/32-core/180W) FIO Processor Kit
(Recommended)

P04852-L21

NOTE: Ships with Performance Heatsink.

HPE DL325 Gen10 AMD EPYC 7501 (2.0GHz/32-core/155-170W) FIO Processor Kit
(Recommended)

P04853-L21

NOTE: Ships with Standard Heatsink.

HPE DL325 Gen10 AMD EPYC 7451 (2.3GHz/24-core/180W) FIO Processor Kit
(Recommended)

P04854-L21

NOTE: Ships with Performance Heatsink.

HPE DL325 Gen10 AMD EPYC 7401P (2.0GHz/24-core/155-170W) FIO Processor Kit
(Recommended)

P04855-L21

NOTE: Ships with Standard Heatsink.

HPE DL325 Gen10 AMD EPYC 7351P (2.4GHz/16-core/155-170W) FIO Processor Kit
(Recommended)

P04856-L21

NOTE: Ships with Standard Heatsink.

HPE DL325 Gen10 AMD EPYC 7301 (2.2GHz/16-core/155-170W) FIO Processor Kit
(Recommended)

P04857-L21

NOTE: Ships with Standard Heatsink.

HPE DL325 Gen10 AMD EPYC 7281 (2.1GHz/16-core/155-170W) FIO Processor Kit
(Recommended)

P04858-L21

NOTE: Ships with Standard Heatsink.

HPE DL325 Gen10 AMD EPYC 7261 (2.5GHz/8-core/155-170W) FIO Processor Kit
(Recommended)

P05918-L21

NOTE: Ships with Standard Heatsink.

Configuration Information – Factory Integrated Models

HPE DL325 Gen10 AMD EPYC 7251 (2.1GHz/8-core/120W) FIO Processor Kit (Recommended) P04859-L21

NOTE: Ships with Standard Heatsink.

Step 2b: Choose Memory Options

Please select one or more memory from below.

For new Gen10 memory population rule whitepaper and optimal memory performance guidelines, please go to: <http://www.hpe.com/docs/amd-population-rules>

For Gen10 memory speed table, please go to: <http://www.hpe.com/docs/amd-speed-tables>

NOTE: Memory DIMM availability with a server platform is dependent upon completion of certification testing.

NOTE: The maximum memory speed is a function of the memory type, memory configuration, and processor model.

Registered DIMMs (RDIMMs) - Recommended

HPE 8GB (1x8GB) Single Rank x8 DDR4-2666 CAS-19-19-19 Registered Smart Memory Kit (Recommended) 838079-B21

HPE 16GB (1x16GB) Dual Rank x8 DDR4-2666 CAS-19-19-19 Registered Smart Memory Kit (Recommended) 838089-B21

HPE 32GB (1x32GB) Dual Rank x4 DDR4-2666 CAS-19-19-19 Registered Smart Memory Kit (Recommended) 838083-B21

HPE 64GB (1x64GB) Dual Rank x4 DDR4-2666 CAS-19-19-19 Registered Smart Memory Kit (Recommended) P05592-B21

Registered DIMMs (RDIMMs) - Extended

HPE 16GB (1x16GB) Single Rank x4 DDR4-2666 CAS-19-19-19 Registered Smart Memory Kit (Extended) 838081-B21

HPE 64GB (1x64GB) Quad Rank x4 DDR4-2666 CAS-19-19-19 Load Reduced Smart Memory Kit (Extended) 838085-B21

HPE 128GB (1x128GB) Octal Rank x4 DDR4-2666 CAS-22-19-19 3DS Load Reduced Smart Memory Kit (Extended) 838087-B21

Step 2c: Choose Power Supplies

Select one or two power supplies from below.

NOTE: Mixing of 2 different power supplies is NOT allowed.

HPE ProLiant Gen10 Entry Level Server Power Supplies - Non-Redundant - Recommended

HPE 500W Low Halogen FIO Power Supply Kit (Recommended) 837074-B21

NOTE: This is a Factory Installed Option (FIO) only.

NOTE: Supports Gold-level efficiency (92%) with a standard C14 inlet connector. No support for HPE Power Discovery Services.

HPE ProLiant Gen10 Flexible Slot Power Supplies - Redundant - Recommended

Select one or two power supplies from below.

NOTE: Mixing of 2 different power supplies is NOT allowed.

NOTE: HPE DL325 Gen10 Redundant Power Supply Enablement Kit (Recommended) (P04983-B21) is mandatory to use any of the following power supplies.

HPE 500W Flex Slot Platinum Hot Plug Low Halogen Power Supply Kit (Recommended) 865408-B21

HPE 800W Flex Slot Platinum Hot Plug Low Halogen Power Supply Kit (Recommended) 865414-B21

HPE 800W Flex Slot Titanium Hot Plug Low Halogen Power Supply Kit (Recommended) 865438-B21

HPE 800W Flex Slot -48VDC Hot Plug Low Halogen Power Supply Kit (Recommended) 865434-B21

HPE 1600W Flex Slot Platinum Hot Plug Low Halogen Power Supply Kit (Recommended) 830272-B21

Configuration Information – Factory Integrated Models

HPE ProLiant Gen10 Flexible Slot Power Supplies - Redundant - Extended

HPE 800W Flex Slot Universal Hot Plug Low Halogen Power Supply Kit (Extended) 865428-B21

NOTE: Prior to making a power supply selection it is highly recommended that the HPE Power Advisor is run to determine the right size power supply for your server configuration. The HPE Power Advisor is located at: <http://www.hpe.com/info/hppoweradvisor>

NOTE: All power supplies in a server should match. Mixing Power Supplies is not supported.

Step 3: Choose Additional Factory Integratable Options

One of the following from each list may be selected if desired at time of factory integration

HPE Unique Options - Recommended

HPE DL325 Gen10 2SFF Smart Array SAS FIO Cable Kit (Recommended) P05036-B21

NOTE: This option kit is required to connect the 2SFF FIO Enablement Kit (Extended) (881179-B21) to E208i-a or P408i-a controller.

HPE DL325 Gen10 8SFF Embedded SATA Controller FIO Cable Kit (Recommended) P05030-B21

NOTE: This option kit is used with the 8SFF CTO to connect to the embedded SATA controller on mother board.

NOTE: The embedded SATA controller works only in the AHCI mode and does not support SW RAID.

HPE DL325 Gen10 2SFF Embedded SATA Controller FIO Cable Kit (Recommended) P05039-B21

NOTE: This option kit is used with the 2SFF SAS/SATA FIO Enablement Kit to connect to the embedded SATA controller on mother board.

NOTE: The embedded SATA controller works only in the AHCI mode and does not support SW RAID.

HPE Unique Options - Extended

HPE 1U Gen10 4LFF Embedded SATA Controller FIO Cable Kit (Extended) 866444-B21

NOTE: This option kit is used with the 4LFF CTO to connect to the embedded SATA controller on mother board.

NOTE: The embedded SATA controller works only in the AHCI mode and does not support SW RAID

HPE 1U Gen10 2SFF SAS/SATA FIO Enablement Kit without Cables (Extended) 881179-B21

NOTE: This option can be selected only on 8SFF CTO or NVMe SFF CTO.

NOTE: This is an FIO option only.

NOTE: This option kit will enable 2SFF SAS/SATA drives.

Security

HPE Gen10 TPM 1.2 FIO Setting 872108-B21

NOTE: HPE Trusted Platform Module 2.0 Gen10 Option (Recommended) (864279-B21), if it needs to be operated in TPM 1.2 Mode.

BIOS Mode

HPE Legacy FIO Mode Setting 758959-B22

NOTE: UEFI is the default, this FIO part can be used for CTO to enable Legacy mode.

HPE Converged Infrastructure Management Software

HPE OneView including 3yr 24x7 Support Physical 1-server LTU E5Y34A

HPE OneView w/o iLO including 3yr 24x7 Support 1-server FIO LTU P8B31A

Step 4: Choose additional options for Factory Integration from Core and Additional Options sections below

Core Options

Recommended

Offering the best combination of performance, value and availability, Recommended Options have been selected by HPE experts to provide the right technology for a range of workloads and market segments. Fully integrated into the ProLiant management and security experience, Recommended Options provide the best fit with timely availability.

Extended

Extended Options provide an extended catalog of products tailored for customers in specific markets or with specific workloads, requiring the utmost in performance or value. Fully integrated into the ProLiant management and security experience, Extended Options represent great value and performance but typically have a longer lead-time.

NOTE: Some options may not be integrated at the factory. To ensure only valid configurations are ordered, Hewlett Packard Enterprise recommends the use of an HPE approved configurator. Contact your local sales representative for additional information.

HPE Unique Options - Recommended

HPE DL325 Gen10 PCIe Low Profile Riser Kit (Recommended)	P04849-B21
NOTE: This riser cannot be used when Modular Smart Array is chosen.	
HPE DL325 Gen10 2SFF NVMe Enablement Kit (Recommended)	P04979-B21
NOTE: This option provides support for up to 2 NVMe drives, and can only be populated in SFF or NVMe model only.	
HPE DL325 Gen10 2SFF SAS/SATA Enablement Kit (Recommended)	P05050-B21
NOTE: This option can be selected only on 8SFF CTO or NVMe SFF CTO.	
NOTE: This is an Field Upgrade option only.	
NOTE: This option kit will enable 2SFF SAS/SATA drives.	
NOTE: This option kit contains the necessary cables to connect to controllers	

HPE Unique Options - Extended

HPE DL325 Gen10 Serial Port Enablement Kit (Extended)	P05045-B21
NOTE: This kit would take up the position of Slot 3 and thus cannot be selected in conjunction with Low Profile Riser Kit.	

Memory Selection

To streamline the configuration process for HPE ProLiant Gen10 servers and to provide the best product availability, HPE recommends memory from the list located here:

<http://www.hpe.com/products/recommend>.

Best product availability is limited to US, Canada, and Latin America at this time.

HPE Memory - Recommended

HPE 8GB (1x8GB) Single Rank x8 DDR4-2666 CAS-19-19-19 Registered Smart Memory Kit (Recommended)	838079-B21
HPE 16GB (1x16GB) Dual Rank x8 DDR4-2666 CAS-19-19-19 Registered Smart Memory Kit (Recommended)	838089-B21
HPE 32GB (1x32GB) Dual Rank x4 DDR4-2666 CAS-19-19-19 Registered Smart Memory Kit (Recommended)	838083-B21
HPE 64GB (1x64GB) Dual Rank x4 DDR4-2666 CAS-19-19-19 Registered Smart Memory Kit (Recommended)	P05592-B21

HPE Memory - Extended

HPE 16GB (1x16GB) Single Rank x4 DDR4-2666 CAS-19-19-19 Registered Smart Memory Kit (Extended)	838081-B21
HPE 64GB (1x64GB) Quad Rank x4 DDR4-2666 CAS-19-19-19 Load Reduced Smart Memory Kit (Extended)	838085-B21

Core Options

HPE 128GB (1x128GB) Octal Rank x4 DDR4-2666 CAS-22-19-19 3DS Load Reduced Smart Memory Kit (Extended) 838087-B21

NOTE: Memory DIMM availability with a server platform is dependent upon completion of certification testing.

NOTE: The maximum memory speed is a function of the memory type, memory configuration, and processor model.

HPE Optical Drives - Recommended

HPE 9.5mm SATA DVD-ROM Optical Drive (Recommended) 726536-B21

HPE 9.5mm SATA DVD-RW Optical Drive (Recommended) 726537-B21

HPE DL325 Gen10 4LFF Optical Disk Drive Cable Kit (Recommended) P05968-B21

NOTE: This cable kit must be selected if Optical Drive is chosen on the 4LFF CTO Model

HPE Mobile USB DVD-RW Optical Drive (Recommended) 701498-B21

NOTE: This is only supported on USB 3.0 ports.

HPE Optical Drives - Extended

HPE 1U Gen10 8SFF Optical Disk Drive Enablement Kit (Extended) 873961-B21

NOTE: This enablement kit must be selected if Optical Drive is chosen on the 8SFF or NVMe CTO Model

HPE Drives

Enterprise - 12G SAS - SFF Drives - Recommended

HPE 300GB SAS 12G Enterprise 15K SFF (2.5in) SC 3yr Wty Digitally Signed Firmware HDD (Recommended) 870753-B21

HPE 300GB SAS 12G Enterprise 10K SFF (2.5in) SC 3yr Wty Digitally Signed Firmware HDD (Recommended) 872475-B21

HPE 600GB SAS 12G Enterprise 15K SFF (2.5in) SC 3yr Wty Digitally Signed Firmware HDD (Recommended) 870757-B21

HPE 600GB SAS 12G Enterprise 10K SFF (2.5in) SC 3yr Wty Digitally Signed Firmware HDD (Recommended) 872477-B21

HPE 900GB SAS 12G Enterprise 15K SFF (2.5in) SC 3yr Wty Digitally Signed Firmware HDD (Recommended) 870759-B21

HPE 1.2TB SAS 12G Enterprise 10K SFF (2.5in) SC 3yr Wty Digitally Signed Firmware HDD (Recommended) 872479-B21

HPE 1.8TB SAS 12G Enterprise 10K SFF (2.5in) SC 3yr Wty 512e Digitally Signed Firmware HDD (Recommended) 872481-B21

HPE 2.4TB SAS 12G Enterprise 10K SFF (2.5in) SC 3yr Wty 512e Digitally Signed Firmware HDD (Recommended) 881457-B21

Enterprise - 12G SAS - SFF Drives - Extended

HPE 900GB SAS 12G Enterprise 15K SFF (2.5in) SC 3yr Wty 512e Digitally Signed Firmware HDD (Extended) 870765-B21

Midline - 12G SAS - SFF Drives - Recommended

HPE 1TB SAS 12G Midline 7.2K SFF (2.5in) SC 1yr Wty Digitally Signed Firmware HDD (Recommended) 832514-B21

HPE 2TB SAS 12G Midline 7.2K SFF (2.5in) SC 1yr Wty 512e HDD (Recommended) 765466-B21

Midline - 12G SAS - SFF Drives - Recommended

HPE 1TB SAS 12G Midline 7.2K SFF (2.5in) SC 1yr Wty 512e Digitally Signed Firmware HDD (Recommended) 765464-B21

Enterprise - 12G SAS - LFF Drives - Extended

Core Options

HPE 300GB SAS 12G Enterprise 15K LFF (3.5in) LPC 3yr Wty Digitally Signed Firmware HDD (Extended) 870755-B21

HPE 900GB SAS 12G Enterprise 15K LFF (3.5in) LPC 3yr Wty Digitally Signed Firmware HDD (Extended) 870761-B21

Midline - 12G SAS - LFF Drives - Recommended

HPE 2TB SAS 12G Midline 7.2K LFF (3.5in) LP 1yr Wty Digitally Signed Firmware HDD (Recommended) 833926-B21

HPE 4TB SAS 12G Midline 7.2K LFF (3.5in) LP 1yr Wty Digitally Signed Firmware HDD (Recommended) 833928-B21

HPE 8TB SAS 12G Midline 7.2K LFF (3.5in) LP 1yr Wty 512e Digitally Signed Firmware HDD (Recommended) 834031-B21

HPE 10TB SAS 12G Midline 7.2K LFF (3.5in) LP 1yr Wty Helium 512e Digitally Signed Firmware HDD (Recommended) 857646-B21

HPE 12TB SAS 12G Midline 7.2K LFF (3.5in) LP 1yr Wty Helium 512e Digitally Signed Firmware HDD (Recommended) 881781-B21

Midline - 12G SAS - LFF Drives - Extended

HPE 1TB SAS 12G Midline 7.2K LFF (3.5in) LP 1yr Wty Digitally Signed Firmware HDD (Extended) 846526-B21

HPE 4TB SAS 12G Midline 7.2K LFF (3.5in) LP 1yr Wty 512e HDD (Extended) 861748-B21

HPE 6TB SAS 12G Midline 7.2K LFF (3.5in) LP 1yr Wty 512e HDD (Extended) 861746-B21

Midline - 6G SATA - SFF Drives - Recommended

HPE 1TB SATA 6G Midline 7.2K SFF (2.5in) SC 1yr Wty Digitally Signed Firmware HDD (Recommended) 655710-B21

HPE 2TB SATA 6G Midline 7.2K SFF (2.5in) SC 1yr Wty 512e Digitally Signed Firmware HDD (Recommended) 765455-B21

Midline - 6G SATA - LFF Drives - Recommended

HPE 1TB SATA 6G Midline 7.2K LFF (3.5in) LP 1yr Wty Digitally Signed Firmware HDD (Recommended) 861686-B21

HPE 4TB SATA 6G Midline 7.2K LFF (3.5in) LP 1yr Wty Digitally Signed Firmware HDD (Recommended) 861683-B21

HPE 6TB SATA 6G Midline 7.2K LFF (3.5in) LP 1yr Wty 512e HDD (Recommended) 861742-B21

HPE 8TB SATA 6G Midline 7.2K LFF (3.5in) LP 1yr Wty 512e Digitally Signed Firmware HDD (Recommended) 834028-B21

HPE 10TB SATA 6G Midline 7.2K LFF (3.5in) LP 1yr Wty Helium 512e Digitally Signed Firmware HDD (Recommended) 857650-B21

HPE 12TB SATA 6G Midline 7.2K LFF (3.5in) LP 1yr Wty Helium 512e Digitally Signed Firmware HDD (Recommended) 881787-B21

Midline - 6G SATA - SFF Drives - Extended

HPE 2TB SATA 6G Midline 7.2K LFF (3.5in) LP 1yr Wty Digitally Signed Firmware HDD (Extended) 861681-B21

HPE 4TB SATA 6G Midline 7.2K LFF (3.5in) LP 1yr Wty 512e HDD (Extended) 861744-B21

SSD Selection

To streamline the configuration process for HPE ProLiant Gen10 servers and to provide the best product availability,

HPE recommends SSDs from the list located here: <http://www.hpe.com/products/recommend>.

Read Intensive - 12G SAS - SFF - Solid State Drives - Recommended

HPE 480GB SAS 12G Read Intensive SFF (2.5in) SC 3yr Wty Digitally Signed Firmware SSD (Recommended) 875311-B21

HPE 960GB SAS 12G Read Intensive SFF (2.5in) SC 3yr Wty Digitally Signed Firmware SSD (Recommended) 872390-B21

Core Options

HPE 960GB SAS 12G Read Intensive SFF (2.5in) SC 3yr Wty Digitally Signed Firmware SSD (Recommended)	875313-B21
HPE 1.92TB SAS 12G Read Intensive SFF (2.5in) SC 3yr Wty Digitally Signed Firmware SSD (Recommended)	872392-B21
HPE 1.92TB SAS 12G Read Intensive SFF (2.5in) SC 3yr Wty Digitally Signed Firmware SSD (Recommended)	875326-B21
HPE 3.84TB SAS 12G Read Intensive SFF (2.5in) SC 3yr Wty Digitally Signed Firmware SSD (Recommended)	872394-B21

Read Intensive - 12G SAS - SFF - Solid State Drives - Extended

HPE 3.84TB SAS 12G Read Intensive SFF (2.5in) SC 3yr Wty Digitally Signed Firmware SSD (Extended)	875330-B21
HPE 7.68TB SAS 12G Read Intensive SFF (2.5in) SC 3yr Wty Digitally Signed Firmware SSD (Extended)	870144-B21
HPE 15.3TB SAS 12G Read Intensive SFF (2.5in) SC 3yr Wty Digitally Signed Firmware SSD (Extended)	870148-B21

Mixed Use - 12G SAS - SFF - Solid State Drives - Recommended

HPE 400GB SAS 12G Mixed Use SFF (2.5in) SC 3yr Wty Digitally Signed Firmware SSD (Recommended)	872374-B21
HPE 400GB SAS 12G Mixed Use SFF (2.5in) SC 3yr Wty Digitally Signed Firmware SSD (Recommended)	873359-B21
HPE 800GB SAS 12G Mixed Use SFF (2.5in) SC 3yr Wty Digitally Signed Firmware SSD (Recommended)	872376-B21
HPE 800GB SAS 12G Mixed Use SFF (2.5in) SC 3yr Wty Digitally Signed Firmware SSD (Recommended)	873363-B21
HPE 1.6TB SAS 12G Mixed Use SFF (2.5in) SC 3yr Wty Digitally Signed Firmware SSD (Recommended)	872382-B21
HPE 1.6TB SAS 12G Mixed Use SFF (2.5in) SC 3yr Wty Digitally Signed Firmware SSD (Recommended)	873365-B21
HPE 3.2TB SAS 12G Mixed Use SFF (2.5in) SC 3yr Wty Digitally Signed Firmware SSD (Recommended)	873367-B21

Mixed Use - 12G SAS - SFF - Solid State Drives - Extended

HPE 3.2TB SAS 12G Mixed Use SFF (2.5in) SC 3yr Wty Digitally Signed Firmware SSD (Extended)	872386-B21
---	------------

Write Intensive - 12G SAS - SFF - Solid State Drives - Recommended

HPE 400GB SAS 12G Write Intensive SFF (2.5in) SC 3yr Wty Digitally Signed Firmware SSD (Recommended)	873351-B21
HPE 800GB SAS 12G Write Intensive SFF (2.5in) SC 3yr Wty Digitally Signed Firmware SSD (Recommended)	873355-B21

Write Intensive - 12G SAS - SFF - Solid State Drives - Extended

HPE 1.6TB SAS 12G Write Intensive SFF (2.5in) SC 3yr Wty Digitally Signed Firmware SSD (Extended)	873357-B21
---	------------

Read Intensive - 6G SATA - SFF - Solid State Drives - Recommended

HPE 240GB SATA 6G Read Intensive SFF (2.5in) SC 3yr Wty Digitally Signed Firmware SSD (Recommended)	875503-B21
HPE 480GB SATA 6G Read Intensive SFF (2.5in) SC 3yr Wty Digitally Signed Firmware SSD (Recommended)	875509-B21
HPE 480GB SATA 6G Read Intensive SFF (2.5in) SC 3yr Wty Digitally Signed Firmware SSD (Recommended)	P06194-B21
HPE 960GB SATA 6G Read Intensive SFF (2.5in) SC 3yr Wty Digitally Signed Firmware SSD (Recommended)	875511-B21

Core Options

HPE 960GB SATA 6G Read Intensive SFF (2.5in) SC 3yr Wty Digitally Signed Firmware SSD (Recommended) P06196-B21

HPE 1.92TB SATA 6G Read Intensive SFF (2.5in) SC 3yr Wty Digitally Signed Firmware SSD (Recommended) 875513-B21

HPE 1.92TB SATA 6G Read Intensive SFF (2.5in) SC 3yr Wty Digitally Signed Firmware SSD (Recommended) P06198-B21

Read Intensive - 6G SATA - SFF - Solid State Drives - Extended

HPE 240GB SATA 6G Read Intensive SFF (2.5in) SC 3yr Wty Digitally Signed Firmware SSD (Extended) 877740-B21

HPE 480GB SATA 6G Read Intensive SFF (2.5in) SC 3yr Wty Digitally Signed Firmware SSD (Extended) 877746-B21

HPE 960GB SATA 6G Read Intensive SFF (2.5in) SC 3yr Wty Digitally Signed Firmware SSD (Extended) 877752-B21

HPE 1.92TB SATA 6G Read Intensive SFF (2.5in) SC 3yr Wty Digitally Signed Firmware SSD (Extended) 877758-B21

HPE 3.84TB SATA 6G Read Intensive SFF (2.5in) SC 3yr Wty Digitally Signed Firmware SSD (Extended) 877764-B21

HPE 3.84TB SATA 6G Read Intensive SFF (2.5in) SC 3yr Wty Digitally Signed Firmware SSD (Extended) P06200-B21

Read Intensive - 6G SATA - SFF - Solid State Drives - Recommended

HPE 240GB SATA 6G Read Intensive SFF (2.5in) SC 3yr Wty Digitally Signed Firmware SSD (Recommended) P04556-B21

HPE 480GB SATA 6G Read Intensive SFF (2.5in) SC 3yr Wty Digitally Signed Firmware SSD (Recommended) P04560-B21

HPE 960GB SATA 6G Read Intensive SFF (2.5in) SC 3yr Wty Digitally Signed Firmware SSD (Recommended) P04564-B21

HPE 1.92TB SATA 6G Read Intensive SFF (2.5in) SC 3yr Wty Digitally Signed Firmware SSD (Recommended) P04566-B21

Read Intensive - 6G SATA - SFF - Solid State Drives - Extended

HPE 3.84TB SATA 6G Read Intensive SFF (2.5in) SC 3yr Wty Digitally Signed Firmware SSD (Extended) P04570-B21

Read Intensive - 6G SATA - LFF - Solid State Drives - Extended

HPE 960GB SATA 6G Read Intensive LFF (3.5in) LPC 3yr Wty Digitally Signed Firmware SSD (Extended) 877756-B21

HPE 1.92TB SATA 6G Read Intensive LFF (3.5in) LPC 3yr Wty Digitally Signed Firmware SSD (Extended) 877762-B21

Mixed Use - 6G SATA - SFF - Solid State Drives - Recommended

HPE 240GB SATA 6G Mixed Use SFF (2.5in) SC 3yr Wty Digitally Signed Firmware SSD (Recommended) 875483-B21

HPE 480GB SATA 6G Mixed Use SFF (2.5in) SC 3yr Wty Digitally Signed Firmware SSD (Recommended) 875470-B21

HPE 960GB SATA 6G Mixed Use SFF (2.5in) SC 3yr Wty Digitally Signed Firmware SSD (Recommended) 875474-B21

HPE 1.92TB SATA 6G Mixed Use SFF (2.5in) SC 3yr Wty Digitally Signed Firmware SSD (Recommended) 875478-B21

Mixed Use - 6G SATA - SFF - Solid State Drives - Extended

HPE 240GB SATA 6G Mixed Use SFF (2.5in) SC 3yr Wty Digitally Signed Firmware SSD (Extended) 880295-B21

HPE 480GB SATA 6G Mixed Use SFF (2.5in) SC 3yr Wty Digitally Signed Firmware SSD (Extended) 877776-B21

Core Options

HPE 960GB SATA 6G Mixed Use SFF (2.5in) SC 3yr Wty Digitally Signed Firmware SSD (Extended) 877782-B21

HPE 1.92TB SATA 6G Mixed Use SFF (2.5in) SC 3yr Wty Digitally Signed Firmware SSD (Extended) 877788-B21

Mixed Use - 6G SATA - SFF - Solid State Drives - Recommended

HPE 3.84TB SATA 6G Mixed Use SFF (2.5in) SC 3yr Wty Digitally Signed Firmware SSD (Recommended) P00896-B21

Mixed Use - 6G SATA - LFF - Solid State Drives - Extended

HPE 1.92TB SATA 6G Mixed Use LPC (3.5in) SCC 3yr Wty Digitally Signed Firmware SSD (Extended) P03610-B21

Read Intensive - NVMe - SFF - Solid State Drives - Recommended

HPE 2TB NVMe x4 Lanes Read Intensive SFF (2.5in) SCN 3yr Wty Digitally Signed Firmware SSD (Recommended) 877986-B21

Read Intensive - NVMe - SFF - Solid State Drives - Extended

HPE 1TB NVMe x4 Lanes Read Intensive SFF (2.5in) SCN 3yr Wty Digitally Signed Firmware SSD (Extended) 877984-B21

HPE 4TB NVMe x4 Lanes Read Intensive SFF (2.5in) SCN 3yr Wty Digitally Signed Firmware SSD (Extended) 877988-B21

Mixed Use - NVMe - SFF - Solid State Drives - Recommended

HPE 1.6TB NVMe x4 Lanes Mixed Use SFF (2.5in) SCN 3yr Wty Digitally Signed Firmware SSD (Recommended) 877994-B21

Mixed Use - NVMe - SFF - Solid State Drives - Extended

HPE 3.2TB NVMe x4 Lanes Mixed Use SFF (2.5in) SCN 3yr Wty Digitally Signed Firmware SSD (Extended) 877998-B21

Write Intensive - NVMe - SFF - Solid State Drives - Recommended

HPE 375GB NVMe x4 Lanes Write Intensive SFF (2.5in) SCN 3yr Wty Digitally Signed Firmware SSD (Recommended) 878014-B21

Hard Drive Blank Kits - Recommended

HPE Gen9 LFF HDD Spade Blank Kit (Recommended) 807878-B21

HPE Small Form Factor Hard Drive Blank Kit (Recommended) 666987-B21

Internal Dual M.2 Kit - Recommended

HPE Universal SATA HHHL 3yr Wty M.2 Kit (Recommended) 878783-B21

NOTE: The Universal SATA M.2 Kit above will require a PCIe slot and support up to two of the same M.2 cards below.

Read Intensive - M.2 - Solid State Drives - Recommended

HPE 480GB SATA 6G Read Intensive M.2 2280 3yr Wty Digitally Signed Firmware SSD (Recommended) 875498-B21

Read Intensive - M.2 - Solid State Drives - Extended

HPE 960GB SATA 6G Read Intensive M.2 2280 3yr Wty Digitally Signed Firmware SSD (Extended) 875500-B21

Mixed Use - M.2 - Solid State Drives - Recommended

HPE 240GB SATA 6G Mixed Use M.2 2280 3yr Wty Digitally Signed Firmware SSD (Recommended) 875488-B21

Mixed Use - M.2 - Solid State Drives - Extended

HPE 480GB SATA 6G Mixed Use M.2 2280 3yr Wty Digitally Signed Firmware SSD (Extended) 875490-B21

HPE 960GB SATA 6G Mixed Use M.2 2280 3yr Wty Digitally Signed Firmware SSD (Extended) 875492-B21

HPE Networking

Core Options

1 Gigabit Ethernet adapters - Recommended

HPE Ethernet 1Gb 4-port 331T Adapter (Recommended)	647594-B21
HPE Ethernet 1Gb 4-port 366T Adapter (Recommended)	811546-B21

1 Gigabit Ethernet adapters - Extended

HPE Ethernet 1Gb 2-port 332T Adapter (Extended)	615732-B21
HPE Ethernet 1Gb 2-port 361T Adapter (Extended)	652497-B21

10 Gigabit Ethernet adapters - Recommended

HPE Ethernet 10Gb 2-port 530T Adapter (Recommended)	656596-B21
HPE Ethernet 10Gb 2-port 530SFP Adapter (Recommended)	652503-B21
HPE Ethernet 10Gb 2-port 535T Adapter (Recommended)	813661-B21

10 Gigabit Ethernet adapters - Extended

HPE Ethernet 10Gb 2-port 521T Adapter (Extended)	867707-B21
HPE Ethernet 10Gb 2-port 562T Adapter (Extended)	817738-B21
HPE Ethernet 10Gb 2-port 562SFP+ Adapter (Extended)	727055-B21

25 Gigabit Ethernet adapters - Recommended

HPE Ethernet 10/25Gb 2-port 631SFP28 Adapter (Recommended)	817718-B21
HPE Ethernet 10/25Gb 2-port 640SFP28 Adapter (Recommended)	817753-B21

25 Gigabit Ethernet adapters - Extended

HPE Ethernet 10/25Gb 2-port 621SFP28 Adapter (Extended)	867328-B21
---	------------

100 Gigabit Ethernet adapters - Extended

HPE Ethernet 100Gb 1-port 842QSFP28 Adapter (Extended)	874253-B21
--	------------

NOTE: The DL325 Gen10 ships with 4x 1 Gb Embedded.

NOTE: 4-port adapters go only into Slot 1.

NOTE: A minimum of two Gigabytes (2 GB) of server memory is required per each adapter.

NOTE: Direct Attach Cable (DAC) for copper environments or fiber transceivers and cables for fiber-optic environments must be purchased separately. Please see the related NIC QuickSpecs for Technical Specifications and additional information:

<http://www.hpe.com/us/en/product-catalog/servers/server-adapters.hits-12.html>.

FlexibleLOM adapters - Recommended

HPE Ethernet 1Gb 4-port 331FLR Adapter (Recommended)	629135-B22
HPE Ethernet 1Gb 4-port 366FLR Adapter (Recommended)	665240-B21
HPE FlexFabric 10Gb 2-port 533FLR-T Adapter (Recommended)	700759-B21
HPE FlexFabric 10Gb 2-port 534FLR-SFP+ Adapter (Recommended)	700751-B21
HPE Ethernet 10Gb 2-port 535FLR-T Adapter (Recommended)	817721-B21
HPE FlexFabric 10Gb 4-port 536FLR-T Adapter (Recommended)	764302-B21
HPE Ethernet 10/25Gb 2-port 631FLR-SFP28 Adapter (Recommended)	817709-B21
HPE Ethernet 10/25Gb 2-port 640FLR-SFP28 Adapter (Recommended)	817749-B21

NOTE: The DL325 Gen10 chassis ships with 4x 1 Gb embedded.

NOTE: Only one FlexibleLOM can be added to the server. These options are upgradeable and can be changed from the original configuration after the server is shipped.

NOTE: Direct Attach Cable (DAC) for copper environments or fiber transceivers and cables for fiber-optic environments must be purchased separately. Please see the related NIC QuickSpecs for Technical Specifications and additional information:

<http://www.hpe.com/us/en/product-catalog/servers/server-adapters.hits-12.html>.

FlexibleLOM adapters - Extended

HPE Ethernet 10Gb 2-port 562FLR-T Adapter (Extended)	817745-B21
HPE Ethernet 10Gb 2-port 562FLR-SFP+ Adapter (Extended)	727054-B21
HPE Ethernet 10/25Gb 2-port 622FLR-SFP28 Converged Network Adapter (Extended)	867334-B21

NOTE: The DL325 Gen10 chassis ships with 4x 1 Gb embedded.

Core Options

NOTE: Only one FlexibleLOM can be added to the server. These options are upgradeable and can be changed from the original configuration after the server is shipped.

NOTE: Direct Attach Cable (DAC) for copper environments or fiber transceivers and cables for fiber-optic environments must be purchased separately. Please see the related NIC QuickSpecs for Technical Specifications and additional information:

<http://www.hpe.com/us/en/product-catalog/servers/server-adapters.hits-12.html>.

HPE InfiniBand - Recommended

HPE InfiniBand FDR/Ethernet 10Gb/40Gb 2-port 544+FLR-QSFP Adapter (Recommended)	764285-B21
HPE InfiniBand FDR/Ethernet 40/50Gb 2-port 547FLR-QSFP Adapter (Recommended)	879482-B21
HPE InfiniBand EDR 100Gb 1-port 841QSFP28 Adapter (Recommended)	872725-B21
HPE InfiniBand EDR/Ethernet 100Gb 2-port 841QSFP28 Adapter (Recommended)	872726-B21
HPE 100Gb 1-port OP101 QSFP28 x16 PCIe Gen3 with Intel Omni-Path Architecture Adapter (Recommended)	829335-B21

HPE InfiniBand - Extended

HPE InfiniBand FDR/Ethernet 10Gb/40Gb 2-port 544+QSFP Adapter (Extended)	764284-B21
HPE InfiniBand EDR/Ethernet 100Gb 1-port 840QSFP28 Adapter (Extended)	825110-B21
HPE InfiniBand EDR/Ethernet 100Gb 2-port 840QSFP28 Adapter (Extended)	825111-B21

HPE Power Supplies - Recommended

HPE Flexible Slot (Flex Slot) Power Supplies share a common electrical and physical design that allows for hot plug, tool-less installation into HPE ProLiant Gen10 Performance Servers. Flex Slot power supplies are certified for high-efficiency operation and offer multiple power output options, allowing users to "right-size" a power supply for specific server configurations. This flexibility helps to reduce power waste, lower overall energy costs, and avoid "trapped" power capacity in the data center.

NOTE: Prior to making a power supply selection it is highly recommended that the HPE Power Advisor is run to determine the right size power supply for your server configuration. The HPE Power Advisor is located at: <http://www.hpe.com/info/hppoweradvisor>.

NOTE: All power supplies in a server should match. Mixing Power Supplies is not supported.

NOTE: Option kits contain the specified power supply and a PDU IEC cable.

NOTE: 1600W power supplies only support high line voltage.

NOTE: HPE ProLiant servers ship with an IEC-IEC power cord used for rack mounting with Power Distribution Units (PDUs). Visit [HPE power cords](#) for a full list of optional HPE power cords.

HPE 500W Flex Slot Platinum Hot Plug Low Halogen Power Supply Kit (Recommended)	865408-B21
---	------------

NOTE: Flex Slot Platinum power supplies support power efficiency of up to 94% and include a standard C-14 power inlet connector.

NOTE: HPE DL325 Gen10 RPS Enablement Kit (P04983-B21) is mandatory to use this power supply.

HPE 800W Flex Slot Titanium Hot Plug Low Halogen Power Supply Kit (Recommended)	865438-B21
---	------------

NOTE: Flex Slot Titanium power supplies support power efficiency of up to 96% and include a standard C-14 power inlet connector.

NOTE: HPE DL325 Gen10 RPS Enablement Kit (P04983-B21) is mandatory to use this power supply.

HPE 800W Flex Slot Platinum Hot Plug Low Halogen Power Supply Kit (Recommended)	865414-B21
---	------------

Core Options

NOTE: Flex Slot Platinum power supplies support power efficiency of up to 94% and include a standard C-14 power inlet connector.

NOTE: HPE DL325 Gen10 RPS Enablement Kit (P04983-B21) is mandatory to use this power supply.

HPE 800W Flex Slot -48VDC Hot Plug Low Halogen Power Supply Kit (Recommended) 865434-B21

NOTE: Flex Slot -48VDC power supplies support power efficiency of up to 94%.

NOTE: HPE DL325 Gen10 RPS Enablement Kit (P04983-B21) is mandatory to use this power supply.

HPE 1600W Flex Slot Platinum Hot Plug Low Halogen Power Supply Kit (Recommended) 830272-B21

NOTE: Flex Slot Platinum Plus power supplies support power efficiency of up to 94% and include a C-14 power inlet connector that can support HPE Power Discovery Services (blue connector).

NOTE: HPE DL325 Gen10 RPS Enablement Kit (P04983-B21) is mandatory to use this power supply.

HPE DL325 Gen10 Redundant Power Supply Enablement Kit (Recommended) P04983-B21

NOTE: This enablement kit is required to use the Flex Slot power supplies

HPE Power Supplies - Extended

HPE 800W Flex Slot Universal Hot Plug Low Halogen Power Supply Kit (Extended) 865428-B21

NOTE: Flex Slot universal power supplies support power efficiency of up to 94% and support both 277VAC/380VDC power inputs.

NOTE: HPE DL325 Gen10 RPS Enablement Kit (P04983-B21) is mandatory to use this power supply.

Additional Options

Recommended

Offering the best combination of performance, value and availability, Recommended Options have been selected by HPE experts to provide the right technology for a range of workloads and market segments. Fully integrated into the ProLiant management and security experience, Recommended Options provide the best fit with timely availability.

Extended

Extended Options provide an extended catalog of products tailored for customers in specific markets or with specific workloads, requiring the utmost in performance or value. Fully integrated into the ProLiant management and security experience, Extended Options represent great value and performance but typically have a longer lead-time.

NOTE: Some options may not be integrated at the factory. To ensure only valid configurations are ordered, Hewlett Packard Enterprise recommends the use of an HPE approved configurator. Contact your local sales representative for additional information.

Embedded Management

HPE iLO Advanced

HPE iLO Advanced Electronic License with 1yr Support on iLO Licensed Features	E6U59ABE
HPE iLO Advanced 1-server License with 1yr Support on iLO Licensed Features	512485-B21
HPE iLO Advanced Flexible Quantity License with 1yr Support on iLO Licensed Features	512486-B21
HPE iLO Advanced AKA Tracking License with 1yr Support on iLO Licensed Features	512487-B21
HPE iLO Advanced Electronic License with 3yr Support on iLO Licensed Features	E6U64ABE
HPE iLO Advanced 1-server License with 3yr Support on iLO Licensed Features	BD505A
HPE iLO Advanced Flexible Quantity License with 3yr Support on iLO Licensed Features	BD506A
HPE iLO Advanced AKA Tracking License with 3yr Support on iLO Licensed Features	BD507A

HPE iLO Advanced Security

HPE iLO Advanced Premium Security Edition License with 1yr Support on Licensed Features	Q7E31A
HPE iLO Advanced Premium Security Flex Qty License with 1yr Support on Licensed Features	Q7E32A
HPE iLO Advanced Premium Security Edition Electronic License with 1yr Support on Licensed Features	Q7E32AAE
HPE iLO Advanced Premium Security AKA Tracking License with 1yr Support on Licensed Features	Q7E35A
HPE iLO Advanced Premium Security Upgrade Electronic License with 3yr Support on Licensed Features	Q7E12AAE
HPE iLO Advanced Premium Security Edition License with 3yr Support on Licensed Features	Q7E33A
HPE iLO Advanced Premium Security Flex Qty License with 3yr Support on Licensed Features	Q7E34A
HPE iLO Advanced Premium Security Edition Electronic License with 3yr Support on Licensed Features	Q7E34AAE
HPE iLO Advanced Premium Security AKA Tracking License with 3yr Support on Licensed Features	Q7E36A

HPE Converged Infrastructure Management Software

Additional Options

HPE OneView Physical Media Kit LTU	E5Y37A
HPE OneView including 3yr 24x7 Support Physical 1-server LTU	E5Y34A
HPE OneView including 3yr 24x7 Support Flexible Quantity E-LTU	E5Y35AAE
HPE OneView w/o iLO including 3yr 24x7 Support 1-server LTU	P8B24A
HPE OneView w/o iLO including 3yr 24x7 Support Track 1-server LTU	P8B25A
HPE OneView w/o iLO including 3yr 24x7 Support Flexible Quantity E-LTU	P8B26AAE

NOTE: Licenses ship without media. The HPE OneView Media Kit can be ordered separately, or can be downloaded.

HPE PCIe Workload Accelerator Options - Extended

HPE 750GB PCIe x4 Lanes Write Intensive HHHL 3yr Wty Digitally Signed Firmware Card (Extended)	878038-B21
HPE 1.6TB PCIe x8 Lanes Mixed Use HHHL 3yr Wty Digitally Signed Firmware Card (Extended)	877825-B21
HPE 3.2TB PCIe x8 Lanes Mixed Use HHHL 3yr Wty Digitally Signed Firmware Card (Extended)	877827-B21
HPE 6.4TB PCIe x8 Lanes Mixed Use HHHL 3yr Wty Digitally Signed Firmware Card (Extended)	877829-B21

HPE Security - Recommended

HPE 1U Gen10 Bezel Kit (Recommended)	867998-B21
HPE Bezel Lock Kit (Recommended)	875519-B21
HPE Trusted Platform Module 2.0 Gen10 Option (Recommended)	864279-B21

NOTE: HPE Trusted Platform Module 2.0 option works with Gen10 servers with UEFI Mode not Legacy Mode. It is not compatible with HPE ProLiant Gen8 servers or earlier generation variants.

NOTE: HPE server systems can have a TPM module (of any type) installed only once. It cannot be replaced with any other TPM module.

NOTE: There is a FIO setting to allow this TPM module to operate in a TPM 1.2 mode (872108-B21).

HPE Security - Extended

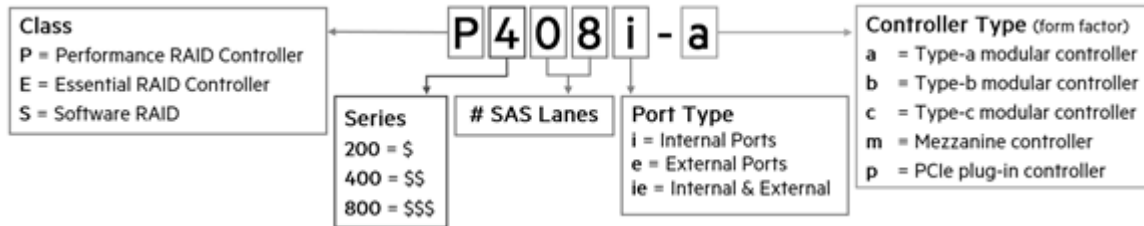
HPE 1U Gen10 Chassis Intrusion Detection Kit (Extended)	866473-B21
---	------------

NOTE: This provides a physical connection from the chassis board and hood and detects any physical intrusion into the chassis, providing security during the entire supply chain process of shipping, receiving, distribution, and operation.

Additional Options

HPE Smart Array Controllers

The Gen10 controller naming framework has been updated to simplify identification as depicted below. For a more detailed breakout of the available Gen10 Smart Array controllers visit the [HPE Smart Array Gen10 Controllers Data Sheet](#).



Smart Array Controllers - Recommended

HPE 96W Smart Storage Battery (up to 20 Devices) with 145mm Cable Kit (Recommended)

NOTE: All performance RAID controllers are supported by the HPE Smart Storage Battery (P01366-B21), which supports multiple devices and is sold separately.

HPE Smart Array P816i-a SR Gen10 (16 Int Lanes/4GB Cache/SmartCache) 12G SAS Modular LH Controller (Recommended) 869083-B21

NOTE: Does not occupy a PCIe expansion slot and includes SmartCache license.

NOTE: The P816i-a cable ships in the 8SFF chassis only.

HPE Smart Array P408i-a SR Gen10 (8 Internal Lanes/2GB Cache) 12G SAS Modular LH Controller (Recommended) 869081-B21

NOTE: Does not occupy a PCIe expansion slot.

HPE Smart Array P408e-p SR Gen10 (8 External Lanes/4GB Cache) 12G SAS PCIe Plug-in Controller (Recommended) 804405-B21

Essential RAID Controllers - Recommended

HPE Smart Array E208e-p SR Gen10 (8 External Lanes/No Cache) 12G SAS PCIe Plug-in Controller (Recommended) 804398-B21

HPE Smart Array E208i-a SR Gen10 (8 Internal Lanes/No Cache) 12G SAS Modular LH Controller (Recommended) 869079-B21

NOTE: Does not occupy a PCIe expansion slot.

HPE Cable Options - Recommended

HPE DL325 Gen10 10SFF Smart Array SAS Cable Kit (Recommended) P05042-B21

HPE Cable Options - Extended

HPE 1U Gen10 4LFF Smart Array SAS Cable Kit (Extended) 866452-B21

HPE 1U Gen10 8SFF Smart Array SAS Cable Kit (Extended) 866448-B21

Optional Software

HPE Smart Array SR Secure Encryption (Data at Rest Encryption/per Server Entitlement) E-LTU Q2F26AAE

HPE Smart Array SR SmartCache (Single Key/Single Server) LTU D7S26A

HPE Smart Array SR SmartCache (Single Key/Multiple Servers) LTU D7S27A

HPE Smart Array SR SmartCache (Single Key/Multiple Servers) E-LTU D7S27AAE

NOTE: SmartCache is offered on HPE Smart Array performance RAID controllers and comes standard (no licensing is required) if the HPE Smart Array P816i-a SR Gen10 Controller is installed in the server.

Additional Options

Optional Upgrades - Recommended

HPE 96W Smart Storage Battery (up to 20 Devices) with 145mm Cable Kit (Recommended) P01366-B21

NOTE: Provides backup power for multiple HPE Smart Array controllers or other devices. Is required with performance RAID controllers.

HPE Tape Backup

NOTE: For the complete range of tape drives, autoloaders, libraries and media see: <https://www.hpe.com/us/en/storage/storeever-tape-storage.html>.

For hardware and software compatibility of Hewlett Packard Enterprise tape backup products <http://www.hpe.com/storage/BURACompatibility>.

HPE Disk-Based Backup

HPE RDX+ 1TB External Backup System B7B69B

HPE RDX+ External Docking System C8S07B

HPE RDX 2TB USB3.0 External Disk Backup System E7X53B

HPE Storage Options

Emulex Fibre Channel HBAs - Recommended

HPE StoreFabric SN1200E 16Gb Single Port Fibre Channel Host Bus Adapter (Recommended) Q0L13A

HPE StoreFabric SN1200E 16Gb Dual Port Fibre Channel Host Bus Adapter (Recommended) Q0L14A

HPE StoreFabric SN1600E 32Gb Single Port Fibre Channel Host Bus Adapter (Recommended) Q0L11A

HPE StoreFabric SN1600E 32Gb Dual Port Fibre Channel Host Bus Adapter (Recommended) Q0L12A

QLogic Fibre Channel HBAs - Recommended

HPE StoreFabric SN1100Q 16Gb Single Port Fibre Channel Host Bus Adapter (Recommended) P9D93A

HPE StoreFabric SN1100Q 16Gb Dual Port Fibre Channel Host Bus Adapter (Recommended) P9D94A

HPE StoreFabric SN1600Q 32Gb Single Port Fibre Channel Host Bus Adapter (Recommended) P9M75A

HPE StoreFabric SN1600Q 32Gb Dual Port Fibre Channel Host Bus Adapter (Recommended) P9M76A

Converged Network Adapters - Recommended

HPE StoreFabric CN1100R Dual Port Converged Network Adapter (Recommended) QW990A

HPE StoreFabric CN1100R 10GBASE-T Dual Port Converged Network Adapter (Recommended) N3U52A

HPE StoreFabric CN1200E 10Gb Converged Network Adapter (Recommended) E7Y06A

HPE StoreFabric CN1200E 10GBASE-T Dual Port Converged Network Adapter (Recommended) N3U51A

NOTE: For the complete listing of Fibre Channel Host Bus Adapters for Windows 2000, Windows Server 2003 and Linux, please see: <https://www.hpe.com/us/en/product-catalog/storage/storage-adapters.hits-12.html>.

Additional Options

HPE Racks

NOTE: Please see the [HPE Advanced Series Racks QuickSpecs](#) for information on additional racks options and rack specifications.

NOTE: Please see the [HPE Enterprise Series Racks QuickSpecs](#) for information on additional racks options and rack specifications.

NOTE: Please see the [HPE Standard Series Racks QuickSpecs](#) for information on additional racks options and rack specifications.

HPE Power Distribution Units (PDUs)

NOTE: Please see the [HPE Basic Power Distribution Units \(PDU\) QuickSpecs](#) for information on these products and their specifications.

NOTE: Please see the [HPE Metered Power Distribution Units \(PDU\) QuickSpecs](#) for information on these products and their specifications.

NOTE: Please see the [HPE Intelligent Power Distribution Unit \(PDU\) QuickSpecs](#) for information on these products and their specifications.

NOTE: Please see the [HPE Metered and Switched Power Distribution Units \(PDU\) QuickSpecs](#) for information on these products and their specifications.

HPE Uninterruptible Power Systems (UPS)

NOTE: To learn more, please visit the [HPE Uninterruptible Power Systems \(UPS\) web page](#).

NOTE: Please see the [HPE DirectFlow Three Phase Uninterruptible Power System QuickSpecs](#) for information on these products and their specifications.

NOTE: Please see the [HPE Line Interactive Single Phase UPS QuickSpecs](#) for information on these products and their specifications.

HPE Rack Options

NOTE: Please see the [HPE KVM Switches web page](#) for information on these products and their specifications.

Rail Kits - Recommended

NOTE: Ball bearing and Easy Install rail kits contain telescoping rails which allow for in-rack serviceability.

NOTE: To assist in the installation of the server into the rack an optional installation tool is available by contacting your local services representative (695539-001).

CAUTION: Hewlett Packard Enterprise recommends that a minimum of two people are required for all Rack Server installations. Please refer to your installation instructions for proper tools and number of people to use for any installation.

HPE 1U Small Form Factor Easy Install Rail Kit (Recommended)

734807-B21

NOTE: HPE 1U Cable Management Arm for Rail Kit (Recommended) (734811-B21).

HPE 1U Cable Management Arm for Rail Kit (Recommended)

734811-B21

HPE USB and SD Options

HPE Enterprise Mainstream Flash Media Kits for Memory Cards - Recommended

Additional Options

HPE 32GB microSD Flash Memory Card (Recommended)	700139-B21
HPE 8GB microSD Flash Memory Card (Recommended)	726116-B21
HPE 8GB microSD Flash USB Drive (Recommended)	737953-B21
HPE 8GB Dual microSD Flash USB Drive (Recommended)	741279-B21

HPE Support Services

Proactive Care

HPE 3Y PC 24x7 DL325 Gen10 SVC	HB4H1E
HPE 3Y PC 24x7 wDMR DL325 Gen10 SVC	HB4H2E
HPE 3Y PC 24x7 wCDMR DL325 Gen10 SVC	HB4H3E

Foundation Care

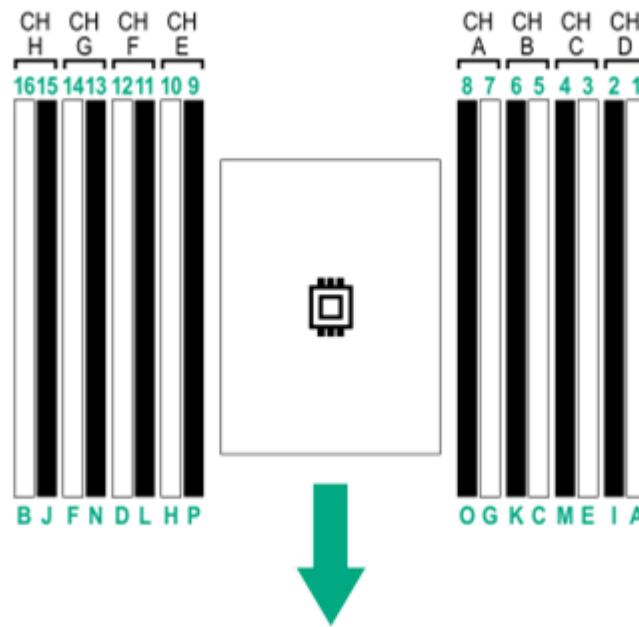
HPE 3Y FC 24x7 DL325 Gen10 SVC	HB4G8E
HPE 3Y FC 24x7 wDMR DL325 Gen10 SVC	HB4G9E
HPE 3Y FC 24x7 wCDMR DL325 Gen10 SVC	HB4H0E

Installation & Startup Services

HPE HW Install Entry 300 Series SVC	U4506E
HPE Startup Entry 300 Series OS SVC	U4507E

NOTE: For a full listing of support services available for this server, please visit <https://ssc.hpe.com/>

Memory



DIMM Type	Register DIMM (RDIMM)			
HPE SKU P/N	838079-B21	838081-B21	838089-B21	838083-B21
SKU Description	HPE 8GB (1x8GB) Single Rank x8 DDR4-2666 CAS-19-19-19 Registered Smart Memory Kit (Recommended)	HPE 16GB (1x16GB) Single Rank x4 DDR4-2666 CAS-19-19-19 Registered Smart Memory Kit (Extended)	HPE 16GB (1x16GB) Dual Rank x8 DDR4-2666 CAS-19-19-19 Registered Smart Memory Kit (Recommended)	HPE 32GB (1x32GB) Dual Rank x4 DDR4-2666 CAS-19-19-19 Registered Smart Memory Kit (Recommended)
DIMM Rank ->	Single Rank (1R)	Single Rank (1R)	Dual Rank (2R)	Dual Rank (2R)
DIMM Capacity ->	8GB	16GB	16GB	32GB
Voltage	1.2V	1.2V	1.2V	1.2V
DRAM depth [bit]	1G	2G	1G	2G
DRAM Width [bit]	x8	x4	x8	x4
DRAM Density	8Gb	8Gb	8Gb	8Gb
CAS Latency	19-19-19	19-19-19	19-19-19	19-19-19
DIMM Native Speed (MT/s)	2666 MT/s	2666 MT/s	2666 MT/s	2666 MT/s
AMD EPYC® 7000 Processors Officially Supported Memory Speed (MT/s)				
1 DIMM Per Channel	2666 MT/s	2666 MT/s	2400 MT/s	2400 MT/s
2 DIMM Per Channel	2133 MT/s	2133 MT/s	2133 MT/s	2133 MT/s

NOTE: The maximum memory speed is a function of the memory type, memory configuration, and processor model.

NOTE: Model 7251 1 DIMM per channel is 2400 MT/s.

For details on the HPE Server Memory speed, visit: <http://www.hpe.com/docs/amd-speed-tables>

Memory

DIMM Type	Load Reduced (LRDIMM)	
HPE SKU P/N	838085-B21	838087-B21
SKU Description	HPE 64GB (1x64GB) Quad Rank x4 DDR4-2666 CAS-19-19-19 Load Reduced Smart Memory Kit (Extended)	HPE 128GB (1x128GB) Octal Rank x4 DDR4-2666 CAS-22-19-19 3DS Load Reduced Smart Memory Kit (Extended)
DIMM Rank ->	Quad Rank (4R)	Octal Rank (8R)
DIMM Capacity ->	64GB	128GB
Voltage	1.2V	1.2V
DRAM depth [bit]	2G	2G
DRAM Width [bit]	x4	x4
DRAM Density	8Gb	8Gb
CAS Latency	19-19-19	22-19-19
DIMM Native Speed (MT/s)	2666	2666
AMD EPYC® 7000 Processors Officially Supported Memory Speed (MT/s)		
1 DIMM Per Channel	2666 MT/s	2666 MT/s
2 DIMM Per Channel	2133 MT/s	2133 MT/s

NOTE: The maximum memory speed is a function of the memory type, memory configuration, and processor model.

NOTE: Model 7251 1 DIMM per channel is 2400 MT/s.

For details on the HPE Server Memory speed, visit: <http://www.hpe.com/docs/amd-speed-tables>

DDR4 memory options part number decoder

NOTE: Capacity references are rounded to the common gigabyte (GB) values.

- 8GB = 8,192 MB
- 16GB = 16,384 MB
- 32GB = 32,768 MB
- 64GB = 65,536 MB

For more information on memory, please see the Memory QuickSpecs: [HPE DDR4 SmartMemory](#)

Storage

4LFF drives



8SFF SAS/SATA + Optional 2SFF (SAS/SATA or NVMe) Shown



8 SFF NVMe + Optional 2SFF (SAS/SATA or NVMe) Shown



Technical Specifications

System Unit

Dimensions	4.29 x 43.46 x 61.49 cm 1.69 x 17.11 x 24.21 in	
Weight (approximate)	10 kg 22.05 lb 15.60 kg 35.27 lb	Minimum: 8 SFF chassis with 8 HDD blanks, 2x Drive Bay blanks, 1x processor including standard heatsink, 2x DIMMs, 1x power supply (plus blank), 1x Smart Array, 1x Riser installed, cables for the above) Maximum: 10 SFF hard drives, 1x processors, 2x power supplies, 1x Smart Array, 2x Risers installed, 16x DIMMs, 2x power supply, cables for the above)
Input Requirements (per power supply)	Rated Line Voltage	100 to 120 VAC 200 to 240 VAC
BTU Rating	Maximum	For 800W Power Supply: 3207 BTU/hr (at 100 VAC), 3071 BTU/hr (at 200 VAC), 3112 BTU/hr (at 240 VAC) for China Only For 500W Power Supply: 1979 BTU/hr (at 100 VAC), 1911 BTU/hr (at 200 VAC), 1965 BTU/hr (at 240 VAC) for China Only
Power Supply Output (per power supply)	Rated Steady-State Power Maximum Peak Power	For 1600W Power Supply: 1600W (at 240 VAC), 1600W (at 240 VAC) For 800W Power Supply: 800W (at 100 VAC), 800W (at 240 VAC), 800W (at 240 VAC) input for China only For 500W Power Supply: 500W (at 100 VAC), 500W (at 240 VAC), 500W (at 240 VAC) input for China only For 1600W Power Supply: 1600W (at 200 to 240 1VAC), 1600W (at 240 VAC) input for China only For 800W Power Supply: 800W (at 100 to 127 VAC), 800W (at 200 to 240 1VAC), 800W (at 240 VAC) input for China only For 500W Power Supply: 500W (at 100 to 127 VAC), 500W (at 200 to 240 VAC), 500W (at 240 VAC) input for China only
System Inlet Temperature	Standard Operating Temperature Extended Ambient Operating Temperature	10° to 35°C (50° to 95°F) at sea level with an altitude derating of 1.0°C per every 305 m (1.8°F per every 1000 ft) above sea level to a maximum of 3050 m (10,000 ft), no direct sustained sunlight. Maximum rate of change is 20°C/hr (36°F/hr). The upper limit and rate of change may be limited by the type and number of options installed. System performance during standard operating support may be reduced if operating with a fan fault or above 30°C (86°F). For approved hardware configurations, the supported system inlet range is extended to be: 5° to 10°C (41° to 50°F) and 35° to 40°C (95° to 104°F) at sea level with an altitude derating of 1.0°C per every 175 m (1.8°F per every 574 ft) above 900 m (2953 ft) to a maximum of 3050 m (10,000 ft). The approved hardware configurations for this

Technical Specifications

system are listed at the URL:

<http://www.hpe.com/servers/ashrae>

For approved hardware configurations, the supported system inlet range is extended to be: 40° to 45°C (104° to 113°F) at sea level with an altitude derating of 1.0°C per every 125 m (1.8°F per every 410 ft) above 900 m (2953 ft) to a maximum of 3050 m (10,000 ft). The approved hardware configurations for this system are listed at the URL:

<http://www.hpe.com/servers/ashrae>

System performance may be reduced if operating in the extended ambient operating range or with a fan fault.

	Non-operating	-30° to 60°C (-22° to 140°F). Maximum rate of change is 20°C/hr (36°F/hr).
Relative Humidity (non-condensing)	Operating	8% to 90% - Relative humidity (Rh), 28°C maximum wet bulb temperature, non-condensing.
	Non-operating	5 to 95% relative humidity (Rh), 38.7°C (101.7°F) maximum wet bulb temperature, non-condensing..
Altitude	Operating	3050 m (10,000 ft). This value may be limited by the type and number of options installed. Maximum allowable altitude change rate is 457 m/min (1500 ft/min).
	Non-operating	9144 m (30,000 ft). Maximum allowable altitude change rate is 457 m/min (1500 ft/min).

Acoustic Noise Listed are the declared A-Weighted sound power levels ($L_{WA(d)}$) and declared average bystander position A-Weighted sound pressure levels (L_{pAm}) when the product is operating in a 23°C ambient environment. Noise emissions were measured in accordance with ISO 7779 (ECMA 74) and declared in accordance with ISO 9296 (ECMA 109). The listed sound levels apply to standard shipping configurations. Additional options may result in increased sound levels. Please have your HPE representative provide information from the HPE EMESC website for further technical details regarding the configurations listed below.

Idle

LWAd	4.8 B Entry
	4.8 B Base
	4.8 B Perf
LpAm	32 dBA Entry
	34 dBA Base
	35 dBA Perf

Operating

LWAd	5.2 B Entry
	5.2 B Base
	5.2 B Perf
LpAm	37 dBA Entry
	38 dBA Base
	37 dBA Perf

NOTE: Acoustics levels presented here are generated by the test configuration only. Acoustics levels will vary depending on system configuration. Values are

Technical Specifications

subject to change without notification and are for reference only.

NOTE: Product conformance to cited product specifications is based on sample (type) testing, evaluation, or assessment. This product or family of products is eligible to bear the appropriate compliance logos and statements.

NOTE: The Listed sound levels apply to standard shipping configurations. Additional options may result in increased sound levels.

Emissions Classification (EMC) - Regulatory Information

To view the regulatory information for your product, view the Safety and Compliance Information for Server, Storage, Power, Networking, and Rack Products, available at the Hewlett Packard Enterprise Support Center:

<http://www.hpe.com/support/Safety-Compliance-EnterpriseProducts>

For information on the HPE Smart Array E208i-a SR Gen10 Controller please refer to their [QuickSpecs](#).

For information on the HPE Smart Array E208i-p SR Gen10 Controller please refer to their [QuickSpecs](#).

For information on the HPE Smart Array E208e-p SR Gen10 Controller please refer to their [QuickSpecs](#).

For information on the HPE Smart Array P408i-a SR Gen10 Controller please refer to their [QuickSpecs](#).

For information on the HPE Smart Array P408i-p SR Gen10 Controller please refer to their [QuickSpecs](#).

For information on the HPE Smart Array P408e-p SR Gen10 Controller please refer to their [QuickSpecs](#).

For information on the HPE Smart Array P816i-a SR Gen10 Controller please refer to their [QuickSpecs](#).

Environment-friendly Products and Approach - End-of-life Management and Recycling

Hewlett Packard Enterprise offers **end-of-life product return, trade-in, and recycling programs**, in many geographic areas, for our products. Products returned to Hewlett Packard Enterprise will be recycled, recovered or disposed of in a responsible manner.

The EU WEEE directive (2002/95/EC) requires manufacturers to provide treatment information for each product type for use by treatment facilities. This information (product disassembly instructions) is posted on the Hewlett Packard Enterprise web site. These instructions may be used by recyclers and other WEEE treatment facilities as well as Hewlett Packard Enterprise OEM customers who integrate and re-sell Hewlett Packard Enterprise equipment.

Summary of Changes

Date	Version History	Action	Description of Change
13-Aug-2018	Version 3	Added	HPE Support Services section was added to the QuickSpecs.
06-Aug-2018	Version 2	Changed	Configuration Information - Factory Integrated Models, Core Options, and Additional Options were revised.
02-Jul-2018	Version 1	Created	New QuickSpecs.



[Sign up for updates](#)

© Copyright 2018 Hewlett Packard Enterprise Development LP. The information contained herein is subject to change without notice. The only warranties for Hewlett Packard Enterprise products and services are set forth in the express warranty statements accompanying such products and services. Nothing herein should be construed as constituting an additional warranty. Hewlett Packard Enterprise shall not be liable for technical or editorial errors or omissions contained herein.

AMD® and EPYC® are registered trademarks of Advanced Micro Devices Corporation in the U.S. and other countries.

Microsoft®, Windows®, and Windows Server® are U.S. registered trademarks of the Microsoft group of companies.

For hard drives, 1GB = 1 billion bytes. Actual formatted capacity is less

a00045498enw - 16225 - Worldwide - V3 - 13-August-2018

